

# THE WAYNE HERALD

WAYNE, NE 68787

MONDAY, FEBRUARY 19, 1990 — 110TH YEAR — NO. 38

THIS ISSUE — 1 SECTION, 8 PAGES

LOCAL DELIVERY 23¢ — NEWSSTAND 45¢

## At a Glance

### Car accident

WINSIDE - The Winside Rescue Unit responded to a one vehicle accident Feb. 14 at 8:15 p.m. one and a half blocks north of Winside Motor. A vehicle driven by Michelle Ramold of Winside struck a utility pole.

Ramold was transported unconscious to Lutheran Community Hospital in Norfolk. She was dismissed from the hospital on Friday.

### Terms expire

WINSIDE - The terms of three Winside village board members will expire this year, including Marvin Cherry, Warren Gallop and Fred Weible.

Incumbents have until March 1 to file for re-election and non-incumbents have until March 13 to file at the Wayne County Court-house.

### Baking for heart

WAYNE - The staff of Wayne Care Centre will again be baking pies and entering a contest for Heart Fund Day on Thursday, Feb. 22.

The contest, judged by the resident council, will take place on Thursday morning at the care centre, with Connie Thompson defending her title from last year.

Employees, who must bake their own pie, compete for a first place prize. Afterward, all of the competing entries are sold with proceeds going to the Heart Fund. The public is invited to visit the care centre for pie and coffee from 2 to 4 p.m. Cost for pie and coffee is \$1, or \$1.25 a la mode.

### More filings

AREA - According to the County Clerk's Office, Darrell E. Maier, Hoskins, filed for reelection on Feb. 14 to keep his seat on the Hoskins board of trustees.

According to the Wayne County Clerk's office, Maier is an incumbent.

On Thursday, Feb. 15, the county clerk's office reported Cap Peterson, an incumbent from Wayne, filed for school district 17 school board.

### Wrice attends

WAYNE - Tyrone Wrice, minority program director at Wayne State College, will present a paper entitled "The Adjustment of Black Student-Athletes" during the 14th annual Pan African Conference at Mankato State University Feb. 22-24.

### Powers to speak

AREA - Dr. P.J. Powers, division head of education/psychology at Wayne State College, will be making a presentation at the Nebraska State-wide Conference on Transition, Saturday, Feb. 24 at 10:45 a.m., in the Northeast Community College Activity Center in Norfolk.

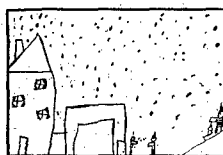
His presentation is entitled "Special Education Career Development Infusion into Regular Education Curriculum."

### WSC Mardi Gras

WAYNE - A Mardi Gras celebration will be held at Wayne State on Tuesday, Feb. 27, starting at 8 p.m. in the lounge of the humanities building. Prizes will be awarded for the best costume and mask and there will be food and games.

The event is sponsored by the WSC University French Club. For more information, contact Janeanne Rockwell at 375-9955.

### Weather



Erin Simpson, 7  
Carroll Elementary  
Extended Weather Forecast:  
Monday through Wednesday,  
chance of rain or snow on  
Tuesday, otherwise dry; highs,  
mid-30s to mid-40s; overnight  
lows, teens to lower-20s.



Photography: Mark Crist

## Snow day

STUDENTS AROUND THE AREA got a chance to take a break from school Thursday as weather forecasters predicted a heavy snow storm would hit the Wayne area. The storm didn't turn out as bad as expected, but these brothers — Jeremy Buck and Josh Buck (back) — took time out from shoveling walks to ride their sled.

## Forum planned

# Panelists to discuss rural issues

By Mark Crist  
Managing Editor

Can you imagine what Wayne would look like if there were 30 stoplights on Main Street rather than three? And can you guess what the town would look like if it boomed to 30,000 people?

These are just some of the questions which will be discussed at the rural development forum scheduled for Wednesday, Feb. 21 at Wayne State College, according to Allen O'Donnell, associate professor of political science and organizer of the event.

O'Donnell, who also runs the Public Affairs Institute at the college, said the five panelists who are scheduled will discuss a wide range of topics which he thinks will answer some of the public's questions about rural revitalization. He said the program is not geared to aim at Gov. Kay Orr's (R-Neb.) plan for rural renaissance in Nebraska, but if people want to discuss it, it could come up during the question-answer period scheduled for the end of the program.

"We're not going to put any limits on it and talk directly on any

specific subject," he said. "Let's just free-wheel it. Let's not lock the doors at either end."

O'DONNELL SAID the program will address issues such as the president's involvement in the rural sector as well as other issues dealing with rural areas. He said he recently read an article in the *Omaha World-Herald* that of the 500-plus communities in Nebraska, 250 have fewer than 500 people. He said he'd like to see some discussion about the future of those types-of towns as well as ones Wayne's size and larger.

"You have the questions about clean air and decent roads," he said. "These items need addressing, too. Of the 57 agricultural counties which are agriculture dependent in Nebraska, all but one experienced a decline in population during the 1980s. What does that mean? By itself it doesn't mean a thing but when you factor everything else into it, we need to determine what it means."

O'Donnell said he'd like to see anywhere from 150 to 200 people present for the meeting.

"I'd like to see the entire community come," he said. "Here's a chance to have all your questions answered."

Panelists at the program will include: Marty Strange, co-founder of the Centre for Rural Affairs; Nebraska State Sen. Don Wesley, who serves on the Unicameral's Select Committee on the Revitalization of

See ISSUE, page 3

## At the Care Centre

# Fairchild enjoys making crafts

EDITOR'S NOTE: This is the third in a series about some of the residents at the Wayne Care Centre.

By Mark Crist  
Managing Editor

Florena Fairchild sat quietly in her wheelchair with her back to the door, facing the window as the tiny snowflakes floated through the air to the ground. On her bed sat skeins of yarn — one pink and the other yellow — and next to them was a shoebox filled with a variety of pieces of yarn and plastic mesh, which had once been used to make some of the crafts Fairchild constructs.

FAIRCHILD IS ONE of the Wayne Care Centre's residents who has found a hobby to pass time, but it's a hobby she's done since she was a little girl. On her easy chair in the corner of her room, placed at the foot of her bed, is one of the afghans she's made during her life.

"I've made three of 'em since I came here," she said. "I enjoy doing this kind of work but I used to do embroidery but my eyes aren't good enough anymore."

Many of the crafts Fairchild makes, she sells to nurses at the Care Centre, or members of the community who ask her to make them. She currently is working on little boxes with the mesh by making designs from little bunnies to other animals. She said she's been doing this type of work steadily since her husband died in 1974, but her craftwork has really picked up steam since she became a resident of the Centre three years ago.

"When I first came in here and was able to do it, I started it up again," the 85-year-old resident

## Area matmen to vie for titles

LINCOLN - After competition finished Friday night, the two area teams with players at the State Wrestling Championships, looked to be in good position to bring home some individual trophies, but neither was in contention for the team crown.

Wayne finished Friday's semi-final competition in ninth-place with 35 team points and one wrestler pitted in Saturday's class B championship round, while Winside finished in second place with 86 points, second only to Mullen, which looks to win the State title, with 122 points and a day of competition to go.

Winside also has two wrestlers who will square off in the championship matches and six wrestlers total who will medal, according to official statistics. Neither Wayne's nor Winside's coaches were available for comment.

QUALIFYING FOR THE championship round for Wayne is Jason

Ehrhardt, who is 30-1 on the season, and 3-0 at State. Ehrhardt will face Jerry Loop, Superior, on Saturday for top honors at 189 lbs. The matchup will pit the number one seeded wrestler (Loop) and the number two wrestler (Ehrhardt) in the championship round.

For Winside, Max Kant, the top seed at 135 lbs. and a 33-0 season record, will face Shawn Pruitt, Arapahoe in the finals. Pruitt's record is 30-4 and he is seeded number five in the state tourney. Also in the championship round is Brian Thompson, who earned the right to be there by defeating the top seeded wrestler in the state, James Hassett, Mullen, Friday night in a 13-8 decision. Thompson will wrestle Curt Holtz, Elwood, for top honors Saturday.

For Wayne, everyone else has been eliminated in the tournament due to losses in earlier rounds.

See STATE, page 4

## School board listens to Rule 10 changes

WAYNE - A number of items were addressed by the Wayne Board of Education during its regular monthly meeting Tuesday, Feb. 13 at Wayne High School.

The school board paid attention to several items which ranged from accreditation standards for Wayne High School to health insurance and the need for additional dressing room and weight room space.

One of the more important items which caught the board's eyes dealt with the State Department of Education's new Rule 10. The board gave a first reading to the new rule, which deals with accreditation topics ranging from athletics to media centers and evaluations.

According to Dr. Francis Haun, superintendent of Wayne Public Schools, Rule 10 replaces rules 14 and 15. Haun added that the only difference in Rule 10 from the previous two rules is it includes making public achievement test scores. Haun added that it will be gone over again during the board's March meeting before it's accepted.

ACCORDING TO A LETTER from the school's insurance carrier, United of Omaha, there will be no

increase in health insurance rates for the period from March 1 through August 31, 1990. The policy, as it stands now, includes \$105.70 for single health insurance rates and \$299.14 for family health.

The board also reviewed a report from the North Central Association which gave Wayne High School no deviations from their accreditation standards.

ACCORDING TO Athletic Director Ron Carnes, there is a need for additional dressing room space and increased facilities for a weight room. In Carnes' proposal, the present weight room, which is 12 feet by 36 feet, is too small and limits space to about 10 people.

According to meeting minutes, Carnes said this limit creates a need to increase room space since visiting boys and girls teams have to share locker room space as it is. Carnes said by adding a new weight room, the old one could be used as a visitors locker room.

The new weight room, which he proposes should be done by adding a 30 foot by 60 foot room at a cost of \$50,000 to the east of

See SCHOOL, page 3

## Homemaker's school to indulge in chocolate

WAYNE - Attention chocolate lovers: What comes to mind when you think of chocolate? Perhaps it's chocolate's irresistibly rich and luscious flavor. That's why millions of us across the country are devoted chocolate lovers.

Indulge your taste for America's favorite flavor with one of the rich chocolaty delights to be demonstrated on stage at the 1990 Homemakers School on Thursday, March 15 at the Wayne City Auditorium. The four prepared chocolate dishes will be given away at the close of the program. Some lucky winner will walk away with a chocolate dessert, ready to be eaten.

All attendees will receive the Exciting New Tastes of the 90s cookbook from Homemakers Schools including all recipes demonstrated during the program, plus various other chocolate snack and dessert recipes.

Don't miss the Exciting New Tastes of the 90s on March 15. A large crowd of approximately 700 is expected to attend the presentation and the free program is scheduled to begin at 7 p.m. with the doors opening at 5 p.m. for attendees to view the many displays set up by area merchants. It will be held at the Wayne City Auditorium.

Home economist Jana Lamplot, of Lincoln (formerly of Pender), will conduct the 2 1/2 hour program. She is one of eight home economists who present these programs in over 300 cities a year. It is the largest homemaker-oriented promotion in North America.

Please join Lamplot and The Wayne Herald and Market for this entertaining look at food preparation and home management ideas for the new decade. The New Tastes of the 90s will be exciting.



Photography: Mark Crist

FLORENA FAIRCHILD TAKES a minute from her craft work to glance up at the camera for a picture. Fairchild is one of many active seniors at the Care Centre.

## Family pre-teen workshop slated

"Are You Listening?" is the theme of a family pre-teen workshop scheduled Saturday, March 3 from 9 a.m. to 3 p.m. at the First United Methodist Church in Wayne. Discussion topics will include communicating with children on such topics as education, religion and alcohol. The workshop also will address the challenges of grandparenting. The workshop fee is \$5 per family, which includes baby-sitting, lunch, coffee, information and fun. Persons interested in attending the event are asked to make their reservations at the United Methodist Church office by Wednesday, Feb. 28. Additional information about the workshop may be obtained by calling Hallie Sherry, 375-1255.

## News and Notes

By Mary Temme, Extension Agent - Home Ec

### Toxic pollutants in your home

Three very different pollutants have gained considerable attention recently whenever the issues of indoor air pollution are discussed. These three pollutants — formaldehyde, asbestos and radon — have potentially very toxic effects. However, they may or may not be of concern to you in your home. Formaldehyde initially gained notoriety as an ingredient in urea formaldehyde insulation. This insulation was very effective and could be installed in existing homes. However, formaldehyde vapors were given off for an extended period of time. In sufficient concentrations, formaldehyde is a carcinogen. For sensitive individuals, very small amounts of formaldehyde vapors can cause serious allergic reactions. Urea formaldehyde insulation is not available today. However, formaldehyde is still used extensively in building products since it is an effective ingredient in glues and binders. Reconstituted wood products and carpets are common sources. The amount of formaldehyde given off declines as the product ages. Therefore, new products are of greatest concern. Common control methods include sealing products to prevent exposure to air and increased ventilation after installation.

**ASBESTOS IS ALSO** a common ingredient in building products. Asbestos is found in many products where thermal or acoustical control is needed, such as pipe insulation or ceiling tiles. Asbestos does not give off vapors. However, breathing in the very fine asbestos particles, over a period of time, causes their accumulation in the lungs and can result in severe health problems.

Asbestos particles are released into the air whenever the products with asbestos are cut, sawn, or otherwise "disturbed." Asbestos building products also tend to crumble with age, releasing fine asbestos particles in the air.

In general, if in good condition, an asbestos-containing product is best left undisturbed. If it's in deteriorating condition, or if maintenance or remodeling activities require disturbing the asbestos, specific guidelines for working with asbestos are available from the Environmental Protection Agency.

**RADON IS A** radioactive gas produced from the natural decay of uranium and radium. As radon continues to decay, it produces radioactive particles, called radon daughters. These radon daughters can adhere to dust particles and be breathed into the lungs, and remain as a carcinogen. The fear of radon is that it cannot be detected by the human senses.

The earth is a source of radon. Other sources include groundwater and masonry. Homes built over uranium or radium ore deposits, even trace deposits, or with groundwater or masonry sources, can have a build-up of radon in the home.

Radon problems are very specific — one home can have a problem and not the next door neighbor's. However, they tend to cluster in geographic areas and be related to soil and rock formations. At this time, no reliable method exists to predict radon problems. Solutions to radon problems include sealing foundations and basements and increasing ventilation.

**LEARN MORE ABOUT** indoor air pollution by attending a workshop Thursday, Feb. 22 at 1:30 p.m. at the Wayne County Courthouse. Carol Larvick, extension agent-home economics from Dakota City, will present the program, "Is Your Home Healthy: Indoor Air Quality."

## Briefly Speaking

### Surprise party honors 92nd

**WINSIDE** - Gladys Gaebler of Winside was the recipient of a surprise party honoring her 92nd birthday on Feb. 9 at the Black Knight in Wayne.

The Birthday Club hosted a noon luncheon with 11 members and the C. O. Witts of Norfolk attending. The entertainment committee included Yleen Cowan, Twila Kahl and Rosemary Mintz.

Following lunch, the group traveled to the Rosemary Mintz home in Laurel for cards, dessert and a late supper.

### Catholic women meeting

**PENDER** - The Rural Northeast Council Catholic Women will have their Day of Reflection meeting on Tuesday, Feb. 27 at St. John's Catholic Church in Pender. Registration is from 9:30 to 10 a.m.

The topic is "Lent — Time for Reparation for Our Sins — And What We Can Do." The Woman of the Year award also will be given.

### Klick and Klatter meets

**WAYNE** - Mrs. Stella Liska was hostess for the Feb. 13 meeting of Klick and Klatter Home Extension Club with 10 members attending.

Marcella Larson, reading leader, read "The Valentine Box," along with the histories of several Wayne social clubs. Marvel Corbit, safety leader, warned of the dangers of falling.

Health Leader Stella Liska read an article, "Be Nice to People," focusing on reducing the risks of heart attacks. Angie Denesia and Irene Victor, members of the social committee, reported sending a card to Joyce Niemann in a Sioux City hospital.

Discussion include the Wayne County Fair, goals and awards. Marcella Larson received the hostess gift.

The lesson, entitled "Financial Advising," was given by Marian Jordan. Ruth Fleer will be the March 13 hostess. Viola Meyer will present the lesson.

### Area FHA students advance to state

**WAYNE** - The Wayne State College home economics department recently hosted 82 Future Homemakers of America (FHA) students from seven high schools during the FHA District V SEARCH event.

Students whose presentations received top gold ratings will advance to the state SEARCH (Student Events for Achievement and Recognition in Consumer Homemaking) level in Lincoln on April 2.

Area students advancing to state competition, and their events, include Heaters Gustafson of Wakefield High School, financial fitness, "The Budget Blues"; and team members Jennifer Leibig and Becca Stingley of Allen High School, all-star chapter display, "Champions Throughout the Year."

The objective of the SEARCH program is to assist students in developing personal leadership, citizenship and occupational knowledge and skills for personal, family and community living through vocational home economics education.

# Holtgrew-Warner repeat vows in Florida outdoor ceremony

The marriage of Della Jean Holtgrew and Karl Dana Warner was solemnized Feb. 4 in an outdoor ceremony at the home of the bride's parents, Warren and Virginia Holtgrew of Nokomis, Fla., formerly of Winside.

The newlyweds are making their home in Punta Gorda, Fla. where the bride is employed as a pharmacist at Walgreen Drug.

The bridegroom is the son of Elsie Warner of Punta Gorda. He is in charge of maintenance for 250 homes at the Punta Gorda mobile home park.

Her knee-length veil was of antique satin and net.

The matron of honor wore a pink floor-length gown with a bodice of white lace featuring a sash in the back. She carried a multi-colored mum basket.

The bridegroom and his attendant were attired in gray business suits with pink rose boutonnières.

Both mothers of the couple wore multi-colored floral dresses in street length with white carnation corsages.

Charles Jackson was in charge of recorded music for the ceremony.

**OFFICIATING AT** the service was Dr. Ross Evans. Matron of honor was the bride's sister, Pat Burris of Winside, and best man was the bridegroom's son, Rodney Warner of Punta Gorda.

Flower girl was Emma Burris of Winside.

On her wedding day, the bride appeared in the wedding dress worn by her mother 35 years ago. The gown featured net over satin with appliqued lace flowers on the floor-length skirt, a Peter Pan collar over scroll work on the bodice, and long sleeves with lace-covered buttons at the wrists.

She also carried the same Bible carried by her mother, covered with pink roses and baby's breath.

**THIRTY GUESTS** attended a reception following the ceremony. Johanna Lewis of Punta Gorda was seated at the guest book, and hosts were Becky and Bill Fry. Gift carrier was Misty Lewis of Punta Gorda.

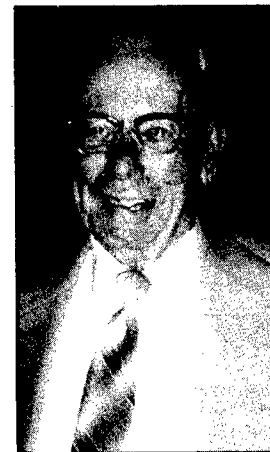
The wedding cake was baked by the bride's mother and decorated by the bride. Cutting the cake were Linda Fry and Dorothy McKinley of Punta Gorda.

Lois Holtgrew of Norfolk poured and Veryl Jackson of Winside served punch.

Serving on the kitchen committee were Emma Peterson of Nokomis, Fla. and Irene Meyer of Winside.



Mr. and Mrs. Karl Warner



Earl Davis

## Open house planned for Carroll man

An open house reception honoring the 90th birthday of Earl Davis of Carroll will be held Sunday, Feb. 25 from 1:30 to 3:30 p.m. at the Other Office in Carroll. The honoree requests no gifts.

Hosting the reception are his son, Gordon Davis, and daughters-in-law Norma and Mary Davis, all of Carroll, along with grandchildren and great grandchildren.

Davis is the oldest living resident of Carroll and still resides in his own home. He was born on a farm southwest of Carroll to the late Griff and Annie Davis.

## Methodist Women have February luncheon meeting

Wayne United Methodist Women met Feb. 14 for a 12:30 p.m. luncheon with 38 members present. Marjorie Porter was chairman of the lunch committee.

Mildred Jones presented the missionary minute and Becky Keidel gave devotions and the program, "Do You Love Your Neighbor?" focusing on prejudices and racism.

The meeting was conducted by Norma Ehlers, vice president, in the absence of President Joyce Niemann who underwent surgery.

Honored with the birthday song were Mable Sorensen, Eilene Mitchell and Ann Roberts.

It was announced that World Day of Prayer will be observed at St. Mary's Catholic Church. A nursery will be provided for the children.

**THE NEXT** meeting of United Methodist Women will be March 14 at 12:30 p.m. with Marilyn Anderson as chairman. Assisting will be Janet Bull, Rachel Wolske, Mary Cherry, Beth Morris and Ruth Luhr.

## New Arrivals

**BOWLIN** — Mr. and Mrs. David Bowlin, Lincoln, a son, Brock David, 7 lbs., Feb. 12. Grandparents are Mr. and Mrs. Jim Nelson, Laurel, and Mr. and Mrs. LeRoy Kurtzer, Lincoln. Great grandmothers are Bernice Nelson and Evelina Johnson, Concord.

## School Lunches

### ALLEN

(Week of Feb. 19-23)

**Monday:** Chicken pattie on bun, tri taters, cherry juice bar.

**Tuesday:** Egg roll, rice, stir fry vegetables, almond cookie.

**Wednesday:** Hamburgers with the works, French fries, green beans, plums (optional).

**Thursday:** Chicken noodle soup, cheddar cheese wedge, lettuce with dressing, half orange.

**Friday:** Roast turkey, mashed potatoes and gravy, sweet potatoes, cranberry sauce, plain gelatin, rolls and butter.

Milk served with each meal

### LAUREL-CONCORD

(Week of Feb. 19-23)

**Monday:** Wiener on bun, French fries, applesauce, Rice Krispie bar, or salad plate.

**Tuesday:** Taverns, cheese slices, green beans, peach crisp, or salad plate.

**Wednesday:** Pizzaburgers, macaroni and cheese, peas, pineapple, or salad plate.

**Thursday:** Chicken pattie on bun, corn, pears, cherry cake, or salad plate.

**Friday:** Fish nuggets, mashed potatoes, peaches, tea rolls, or salad plate.

Milk served with each meal

### WAKEFIELD

(Week of Feb. 19-23)

**Monday:** Spaghetti and meat sauce, cinnamon roll, fruit.

**Tuesday:** Salisbury steak, mashed potatoes, roll, butter and peanut butter, peaches.

**Wednesday:** Pigs in a blanket, tater tots, mixed fruit, cookie.

**Thursday:** Turkey on bun, baked potato, pineapple, bar.

**Friday:** Chili and crackers, grilled cheese, carrot stick, pears.

Milk served with each meal

### WAYNE-CARROLL

(Week of Feb. 19-23)

**Monday:** Hot dog with bun, tri taters, grape juice, cherry shortcake with whipped topping.

**Tuesday:** Burritos, nacho chips with cheese sauce, green beans, pineapple, cookie.

**Wednesday:** Beef pattie with bun, pickle slices, corn, pears, cookie.

**Thursday:** Chicken pattie with bun, lettuce and mayonnaise, tater rounds, applesauce, cookie.

**Friday:** Chili, crackers, carrot sticks, peanut butter cup, peaches, cinnamon roll.

Available daily: Chef's salad, roll or crackers, fruit or juice, and dessert.

Milk served with each meal

### WINSIDE

(Week of Feb. 19-23)

**Monday:** Chicken sandwich with lettuce and mayonnaise, onion rings.

**Tuesday:** Chili and crackers, carrot sticks, peach crisp, or salad bar for students in grades six through 12.

**Wednesday:** Ham pattie on bun, French fries, pickle spears, fruit cookie.

**Thursday:** Pizza, green beans, banana gelatin, or salad bar for students in grades six through 12.

**Friday:** Beef tacos, lettuce and cheese, gems, rice and raisins.

Milk served with each meal

## Financial programs for the elderly topic at WELCA meeting

Thelma Moeller, income maintenance supervisor for the Nebraska Department of Social Services in the Wayne office, was a guest speaker at the Feb. 14 meeting of St. Paul's Women of the Evangelical Lutheran Church in America (WELCA).

Moeller explained the various financial programs and services available for the elderly through the Department of Social Services and through the Goldenrod Hills Community Action Agency.

Moeller said the goal of all of the programs is to keep the elderly in their homes.

Discussion followed, and President Loretta Baier closed the program with a prayer.

**THIRTY MEMBERS** attended the February meeting at the church. Hostesses were Emilie Reeg and Marilyn Carhart. Loretta Baier and Clea Willers assisted in Marilyn's absence.

President Baier opened the business meeting with a reading, followed with committee, service group, circle, Altar Guild and sewing group reports.

Thank you notes were read from Bethphage Residential Center, Lutheran Campus Ministry in Lincoln, Vida Hunter, Pastor Iseminger and Orpha, and from the the Groskurth family and the Helen Cross family.

The Christian action committee reported that seven get well and one sympathy card were sent.

Joye Gettman has sent the used stamps to Tabitha.

**IT WAS ANNOUNCED** that the tri-annual meeting will be held July 12-15 in Anaheim, Calif. with the topic "Women and Children in Poverty." Members voted to send a donation for the program.

World Day of Prayer, sponsored by Wayne Church Women United, is scheduled March 2 at St. Mary's Catholic Church.

### Senior Citizens

## Congregate Meal Menu

(Week of Feb. 19-23)

**Monday:** Center closed for Presidents Day.

**Tuesday:** Meat loaf, hash brown casserole, green beans, coleslaw, raisin bread, pineapple and oranges.

**Wednesday:** Monthly potluck dinner.

**Thursday:** Oven fried chicken, whipped potatoes, stewed tomatoes, relishes, banana.

**Friday:** Tuna and noodles, deviled egg, baby carrots, lettuce, rye bread, pie.

Coffee, tea or milk served with meals

## POLICY ON WEDDINGS

The Wayne Herald welcomes news accounts and photographs of weddings involving families living in the Wayne area.

We feel there is widespread interest in local and area weddings and are happy to make space available for their publication.

Because our readers are interested in current news, all weddings and/or photographs offered for publication in The Wayne Herald must be in our office within 14 days after the date of the ceremony (no exceptions for holidays). There will be a \$10.00 flat fee for stories and/or photographs submitted after that time (up to two months).

Wedding photos to be returned should include a stamped, self-addressed envelope.

For questions concerning the Wayne Herald's wedding policy, contact LaVon Anderson, assistant editor, 375-2600.



## Dixon community prepares for 1990 centennial

The community of Dixon has begun preparations for its centennial celebration in August 1990. A centennial meeting was held earlier this month and committee chairmen were named for the 100th birthday bash scheduled to take place on Sunday, Aug. 12.

Centennial chairman is Velma Dennis. Other committee chairmen include Velma Dennis and Mary Garvin, promotion and advertising; Norma Penlerick, Cindy White and Vonda Dempster, parade; Addie Prescott and Celia Hansen, centennial float; John Young, antique display; Bill Garvin, alumni reunion; Jeannie Kavanaugh, style show; Lois Ankeny, history; Donna Nelson and Bonnie Hirschert, centennial quilt; Bob Dempster, Donna Young and Julie Hartung, noon meal; Euni Diediker and Gordon Hansen, brothers of the brush; Cliff and Laverne Strivens, concession stand; and Velma Dennis, centennial memorabilia.

Each chairman will be responsible for selecting his or her own committee members. It was announced that chairmen are still needed for the following activities — community church service, quilt display, afternoon program, and old-fashioned children's activities.

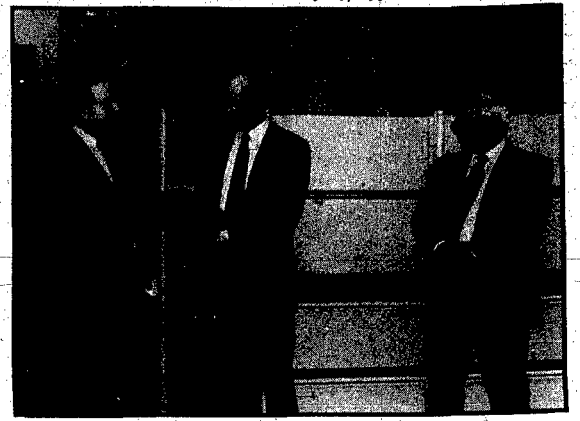
Workers are needed for all committees, and persons interested in assisting with a particular project are asked to contact the committee chairman, John Young or Velma Dennis.

It was announced that plans include a history of the community which will be printed in booklet form and available for sale.

It also was announced that a request has been made with the United States Postal Service for approval of a special stamp cancellation commemorating the Aug. 12 centennial.

Tentative plans are to hold a trunk showing of centennial clothing available to rent. The presentation will be made by the Centennial Shop of Smithland, Iowa.

The next centennial meeting is scheduled today (Monday) at the Dixon auditorium.



Photography: Mark Crist

## Welcoming a new business

**AT A MORNING COFFEE HELD by the Wayne Area Chamber of Commerce, the First National Bank of Omaha was officially welcomed to Wayne as one of the town's newest businesses. Pictured (left) Pat Gross welcomes Ken Nimmo, senior vice-president with a plaque, while Don Koeber does the same on behalf of the Wayne Ambassadors and Wayne Chamber, respectively.**

# Meeting to discuss farming

If you've been wondering what sustainable agriculture was all about, the 1990 annual meeting of the Nebraska Sustainable Agriculture Society is the place to find out. The theme of the meeting is "Better Farming for the 90's."

Marty Strange of the Center for Rural Affairs and Fred Kirschenmann of the Northern Plains Sustainable Agriculture Society are the keynote speakers for the conference.

Strange, author of Family Farming: A New Economic Vision,

is widely regarded as one of our nation's leading analysts of farm policy. Kirschenmann is the author of Switching to a Sustainable System and manages his family's 3,100 acre diversified crop and livestock farm in North Dakota. He is noted as an articulate spokesman on how to make a successful transition from conventional to sustainable farming.

Participants can choose to attend three of 18 workshops on topics that will be of interest to both urban and farm families. In

addition to a variety of workshops on livestock and farming practices, there will be programs on gardening, raising and using herbs, cooking, health, the farm bill and Central American agriculture. Ample time is allowed for discussions with educational and commercial exhibitors as well as other participants. Sharing ideas and information with others is the highlight for many who attend the annual meeting.

This year's meeting will be held on Saturday, Feb. 24 at the New

World Inn in Columbus. Exhibits and registration will open at 8 a.m. The meeting will conclude by 5 p.m.

Registration at the door (including lunch and refreshments) is \$20 for NSAS members and \$25 for non-members. To encourage family participation, spouses and other family members may attend for half price. For more information contact the Nebraska Sustainable Agriculture Society at 402-254-2289 or P.O. Box 736, Hartington, Neb. 68739.

## Jaycee members win awards at convention

The Wayne Jaycees met Monday in the Columbus Federal meeting room. Guest speaker Linda Smith, Executive Vice President of the Wayne Area Chamber of Commerce and Wayne Industries, spoke on how to be a leader.

Following Smith's talk, the Jaycees held their monthly business meeting. Duane Bargholz, Verdel Lutt and Mark Winger reported on their trip to the state convention in Grand Island. Lutt competed for Outstanding Young Nebraskan. Norfolk Jaycee's candidate Paula Plueger of Wayne was one of the Outstanding New Nebraskan award recipients. Honors received by Wayne Jaycees included recruitment awards for Ron

Gentrup, Kent Kwapnioski and Lutt; project book awards for Gentrup and Lutt; and a Nebraska Super Shooters shirt for Bob Keating.

The Jaycees discussed several upcoming projects including an Easter egg hunt in April and the St. Jude's Children's Hospital sand box fill in May. The Jaycees will also be conducting an orientation on Feb. 22 at 7:30 p.m. at Columbus Federal for their new members and other interested persons.

Anyone interested in finding out more about the Wayne Jaycees, should contact their president, Mark Winger, at 375-1439 or 375-2525. The Jaycees organization is open to everyone age 21-39 to join.

## School

(continued from page 1)

the boys' locker room, would be accessible to girls through an entrance through the gym. He said it would take two to three years for this proposal to be completed and added it would be done through a fund raising committee consisting of the athletic director, plus one person from the board of education, booster club, wrestling club, track club and the W Club. He noted, too, that it would be nice to have as much volunteer help as possible.

**IN OTHER MATTERS** the board of education approved minutes and reviewed financial reports; reviewed information from the Wayne Chamber of Commerce

about a legislative meeting March 9 at Geno's Steakhouse; heard from Dr. Haun about the architect's work on the proposed addition to West Elementary; reviewed sections one and two of school board policy; reviewed evaluations and voted to re-elect principals Richard Metteer, David Lutt and Donald Zeiss for the 1990-91 school year; recognized Wayne Education Association for negotiation representative party for teachers; approved a freeholders petition submitted by William Lubberstedt for bringing in 80 acres of land located west of Wayne on Highway 35; and adjourned around 10:10 p.m. on Feb. 13.

The board of education's next regular meeting is scheduled for March 13 at 7:30 p.m.

## News Briefs

### Carlson accepted at Dordt

AREA - Stephanie Carlson, Allen, has been accepted for enrollment at Dordt College in Sioux Center, Iowa. Carlson is a senior at Allen Public High School and is the daughter of Lyle and Carol Carlson.

Dordt College enrolls approximately 1,000 students in more than 40 academic programs.

### Farm Bureau spring banquet

AREA - Wayne County Farm Bureau Spring Banquet will be held Saturday, March 17 at 7 p.m. in the basement of St. Mary's Catholic Church in Wayne.

Jerry Cordrey, director of training, from the American Farm Bureau, Park Ridge, Ill., will be the guest speaker.

Tickets can be purchased in advance from any Wayne County Farm Bureau board member or at the office at 100 Pearl St. If you have any questions about the banquet, call 375-3144.

### Students to participate

AREA - Fifty students from Wayne High School will be among over 850 area high school students are expected to participate in Mount Marty College's annual Theatre Day on Thursday, Feb. 22, featuring the National Players of Washington, D.C.

This year, students will view an abridged 90-minute stage production of Shakespeare's classic comedy, "A Midsummer Night's Dream" starting at 10:30 a.m. in MMC's Marian Auditorium.

Mount Marty's annual Theatre Day program, in conjunction with its hosting of the National Players yearly tour, is offered to provide high school students a better understanding and appreciation for classical theatre.

The nation's longest-running repertory theatre troupe, the National Players will present this year's tour with the full-length public performance of "A Midsummer Night's Dream" on Thursday, Feb. 22 at 7:30 p.m. The theatre troupe returns to MMC on Sunday, Feb. 25 at 7 p.m. with the stage production of Charles Dickens' "Nicholas Nickleby." Both evening performances are in Marian Auditorium.

Tickets for the public performances are available by calling: 668-1517 weekdays from 8:30 a.m. to 4:30 p.m.

## Wayne County Court

### Traffic fines

William G. Nibelink, Rock Valley, Iowa, speeding, \$30; Thomas McCright, Wayne, allowing animal to run at large, \$5; Steven H. Dunbar, Omaha, parking midnight to 5 a.m. where prohibited, \$5; Mary E. Keenan, Norfolk, speeding, \$30; Vernon B. Hunter, South Sioux City, speeding, \$30; Jamie J. Bennett, Ponca, speeding, \$15; Loren D. Lauck, Bloomfield, speeding,

\$30; Todd A. LaVelle, Pierre, S.D., speeding, \$15; Michael H. Thorell, Wausa, violated stop sign, \$15; Troy L. Adams, Orchard, speeding, \$30; Melissa A. Haisch, Laurel, speeding, \$50; Regis J. Tucci, Wayne, speeding, \$30; Ronda K. Snyder, Wayne, speeding, \$30; John W. Paul, Wayne, expired in-

transit, \$25; William J. Thompson, Wayne, speeding, \$30.

### Criminal disposition

State of Nebraska, plaintiff, against Kurt H. Schmoldt, dismissed.

### Criminal filings

State of Nebraska and City of

Wayne, plaintiffs, against Kurt H. Schmoldt, driving while under the influence of alcohol.

State of Nebraska and City of Wayne, plaintiffs, against Shawn E. Magnuson, minor in possession.

State of Nebraska, plaintiff, against Daniel W. Junck, theft by unlawful taking.

## Fairchild-

(continued from page 1)

But that's not to say craft work is Fairchild's only hobby. She said she enjoys reading books and magazines and "anything I can get my hands on." She noted, too, that she enjoys working the day's crossword puzzle.

"I do other jobs, too," the mother of Wayne Police Chief Vern Fairchild, said. "I wrap silver in the dining room and fix the bulletin board for the weather or maybe the thought of the day. I even preach a little bit. I like that."

Craft work, however, is still her favorite pastime, she said.

## Issue

(continued from page 1)

Greater Nebraska; Don Macke, founder of Economic Research Associates; Pat Rogers, an attorney from Randolph; and Dr. Wallace Petersen, an economist with the University of Nebraska. O'Donnell will serve as host and moderator of the panel.

The meeting will be held at 1:30 p.m. in the student center on Feb. 21.

## THE WAYNE HERALD AND MARKETER

114 Main Street Wayne, NE 68787 375-2600 PUBLICATION NUMBER USPS 670-560



**PRIZE WINNING NEWSPAPER**  
1989 Nebraska Press Ass.

**Serving Northeast Nebraska's Greatest Farming Area**

Established in 1875; a newspaper published semi-weekly, Monday and Thursday (except holidays). Entered in the post office and 2nd class postage paid at Wayne, Nebraska 68787. Also publisher of The Marketer, a total market coverage publication.

POSTMASTER: Send address change to The Wayne Herald, P.O. Box 70, Wayne, Nebraska, 68787

**Official Newspaper of the City of Wayne, County of Wayne and State of Nebraska**

### SUBSCRIPTION RATES

In Wayne, Pierce, Cedar, Dixon, Thurston, Cuming, Stanton and Madison Counties: \$23.00 per year \$20.00 for six months. In-state: \$25.50 per year, \$22.00 for six months. Out-state: \$30.50 per year, \$27.00 for six months. Single copies 45 cents.

**National Newspaper Association Sustaining Member 1989**

Publisher - Gary Wright  
Comptroller - Peggy Wright  
Mng. Editor - Mark Crist  
Asst. Editor - LaVon Anderson  
Sports Editor - Kevin Peterson  
Ad Executive - Jan Bartholomous  
Receptionist - Jennifer Cole  
Bookkeeper - Linda Grantfield  
Typesetters

Alyce Henschke & Nori Blackburn  
Composition Foreman - Judi Topp  
Press Foreman - Al Pipplitt  
Darkroom Technician - Jeff Sperry  
Commercial Printers  
Warren Rose & Dan Nelson  
Mailroom Manager - Doris Claussen  
Mailroom Asst. - Jody Lamprecht  
Press Room Asst. - Kevin Baldrige  
General Asst. - David Richter  
Maintenance - Deb & Cecil Vann  
Special Project Asst. - Glenda Schluns & Joni Holdorf



# PRIME INVESTMENT FUND

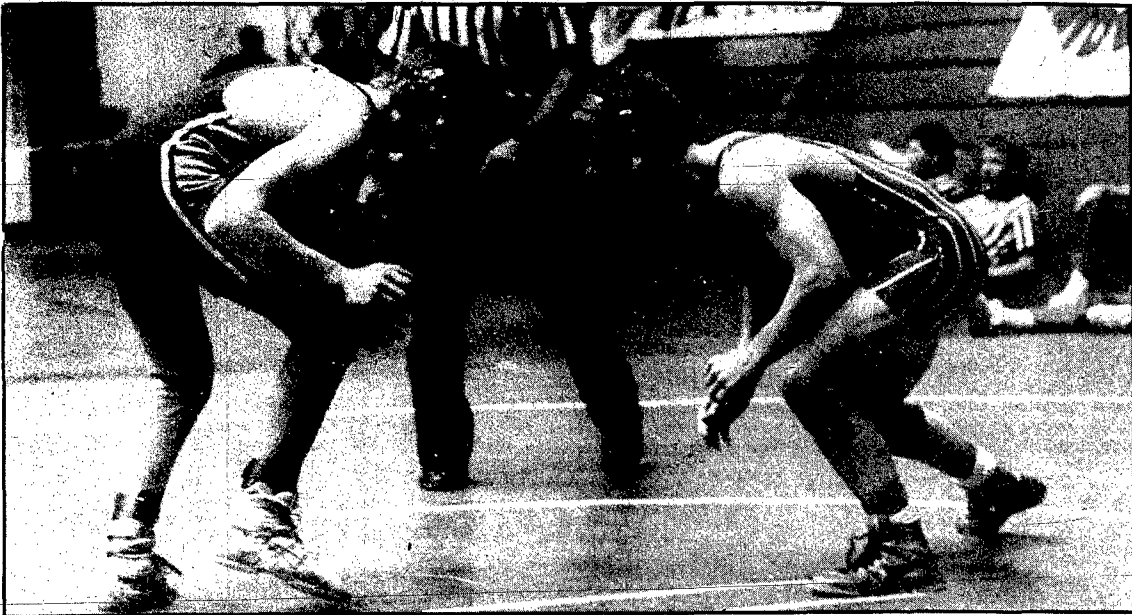
CURRENT RATE	OVER \$25,000	CURRENT YIELD
<b>7.40%</b>		<b>7.66%</b>
CURRENT RATE	\$10,000 - 24,999.99	CURRENT YIELD
<b>7.15%</b>		<b>7.39%</b>

- ACCOUNT HIGHLIGHTS**
- Deposit Anytime
  - Interest Accrued Daily
  - Interest Compounded Monthly
  - 4 FREE Withdrawals Per Month
- ENJOY PRIME MONEY MARKET RATES •ENJOY FLEXIBILITY FOR LIQUID ASSETS  
•ADJUSTED WEEKLY TO GAIN HIGHEST RATE



**The State National Bank and Trust Company**

Wayne, NE 68787 • 402/375-1130 • Member FDIC  
Main Bank 116 West 1st • Drive-In Bank 10th & Main



**WINSIDE'S MAX KANT** stands ready for anything as he will be challenging for the state title in the Class D 135 lbs. weight class at the State Tournament in Lincoln. This picture was taken earlier in the week during first round action.

Photography: Kevin Peterson

## Pierce wins in overtime

# Wayne Blue Devils fall short by four

WAYNE - What started out looking like it might be an easy win turned into a hard to take loss for the Wayne High School boys basketball team Friday night as the Blue Devils lost their season finale to Pierce 64-60 in overtime.

According to Wayne High School Coach Bob Uhing, the Blue Devils demise came as a result of poor rebounding. Uhing said the overtime loss was probably the best effort he's seen from Pierce this year.

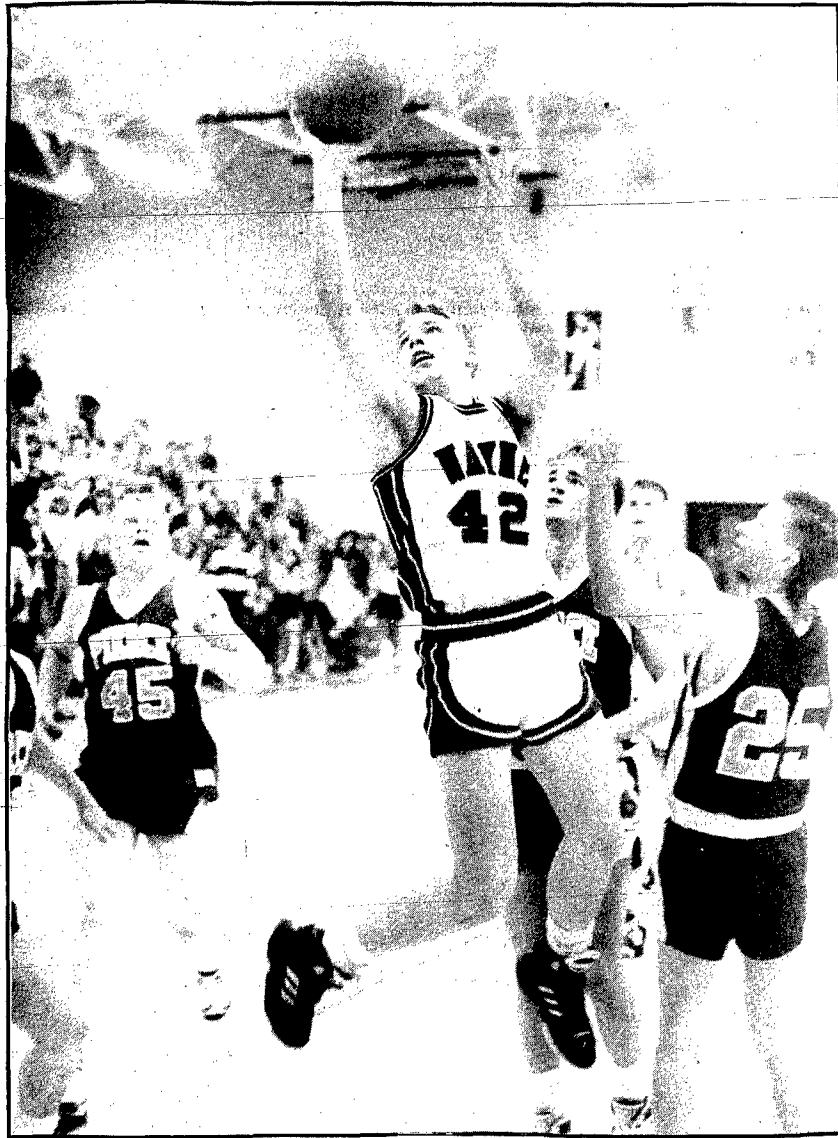
The turning point in the contest seemed to come with only about a minute left in the first half as Wayne was ahead by seven late in the second period, only to allow Pierce to pull the game to within three at halftime. Wayne got the

ball back after Pierce had pulled within three with about 10 seconds left on the clock, but a three-point attempt by Wayne bounced in and out of the basket, rimmed once and fell out as the buzzer sounded.

"We were up by six or seven points and they made a long three-pointer right before the half," Uhing said. "That was probably the turning point. We should've had a seven point lead at the half but it didn't turn out that way."

Leading the way for Pierce's win was Todd Koehler, who had 19 points in the game. Pierce also out-rebounded Wayne 25-28 and committed fewer turnovers than the Blue Devils. Wayne had 14 turnovers to Pierce's six.

Scorers for Wayne included Neil Carnes with 21, Willy Gross with 17, Craig Sharp with 11, Craig Dyar with seven and Kyle Dahl with four.



**WAYNE'S JEFF GRIESCH** DRIVES in against Pierce Friday night early in the second period. In action last night, Pierce beat Wayne 64-60 in overtime.

Photography: Mark Critt

## Wakefield makes it look easy; tops Homer

WAKEFIELD - The Wakefield boys basketball team pretty much manhandled Homer in action Friday, as the Trojans took one step closer to the school basketball record with a 61-49 win.

Led by the balanced scoring attack of Mark Johnson with 16, Tony Krusemark with 14 and Matt Tappe with 12, Wakefield took command by halftime 34-27. The key to the game, according to assistant coach Arnie Cerny was offensive rebounding.

"We did a good job getting the offensive rebounding," he said. "That was a big key, especially in the first half. We got a lot of easy baskets because we had second and third chances at the shot. Our ability to go inside on them if we missed a perimeter shot really gave us another chance."

Wakefield outshot Homer 55-33 in the contest to improve their record to 22-1. Other scoring for Wakefield included Andy McQuistan with 10, Keith Wenstrand with four, Chris Loofoe with three and Anthony Brown with two.

In the rebounding category, the Trojans outdistanced Homer by a 34-20 advantage, while only committing nine turnovers. Wakefield forced Homer into nine 17 turnovers in the game.

"We had played them earlier in the season in the post-holiday tournament," Cerny said. "And we pretty much took control in that game early because we came right at them. Tonight, they came out and played well. They played hard compared to last time. As a team, they never gave up."

Leading scorer for Homer was Travis Bodlak with 24 points.

From the charity stripe, Wakefield sank eight of 12. For Homer, seven of their points was scored from the line from 14 attempts.

Next action for Wakefield is in Wayne at Wayne State College, when they will play Emerson in sub-districts. Game time is slated for 8:45 p.m., following the early game when Laurel-Concord will play Emerson-Hubbard at 7 p.m.

**HOLLYWOOD VIDEO**

2 HEAD VCRs WITH ON SCREEN "EVERYTHING" VIDEO MAINTENANCE & MOVIE PACKAGE

New Movies: "PARENTHOOD" "SEE YOU IN THE MOVIES" "FRIDAY THE 13TH" "PI" "INDY 3" "UNCLE BUCK" "WIRED"

## State

(continued from page 1)

Winside, however, has qualified 112 lbs. Chad Carlson, who will battle for either third or fifth, depending on Saturday's first match; 140 lbs., Shane Frahm, who will wrestle for third or fifth; Jason Krueger, who will wrestle for third or fifth; and Trevor Topp, at 189 lbs., who will also wrestle for third or fifth. Medalists are wrestlers who finish first through sixth.

In first place in the class B competition is York with 62 points, Valentine is second with 55 1/2, Plattsmouth is tied for third with Crete at 54 points and fifth is Schuyler with 47 points.

In class D competition only the top two teams were available at press time.

Individual results on Winside's and Wayne's teams is as follows:

### Wayne

112 lbs. — Brent Gamble, lost first two matches and was eliminated.

119 lbs. — Mike DeNayer, finished competition with a 1-2 record. DeNayer won his first match over Peter Courke, Aurora 13-3; lost his second match 9-4 to top seed Brennan Durand (27-1), Plattsmouth; lost by pin in 4:05 to Mike Schultz, Ogalala.

135 lbs. — Chris Janke, finished 2-2 in the tournament. Janke defeated Jim Lauridsen, O'Neal 3-2; lost 3-0 to Darin McDaniel, York; defeated Justin Aerni, Columbus-Lakeview, 4-2; lost 5-1 to Jason Chisholm, Wahoo.

152 lbs. — Jesse Broderson, finished 1-2 in the tournament. Broderson lost 7-0 to Dennis Mez, Falls City; pinned Troy Hansen, Valentine in 4:57; lost 11-0 to Scott Carlson, Lincoln Pius X.

189 lbs. — Jason Ehrhardt will compete for the state title at his weight Saturday after pinning Mike Jurgens, Holdrege in 1:30; defeating Jonal Brockmier, Central City 14-8; pinned Robbie Stenka, St. Paul, in 4:41.

275 lbs. — Matt Bruggemann finished the tournament 1-2. Bruggemann lost a 7-3 decision to Shawn Banzhaf, Lexington; pinned Bob Morse, Centura in 2:39; lost 2-0 decision to Steve Brusck, Gretna.

### Winside

103 lbs. — Chris Mann finished 0-2 in the tournament.

112 lbs. — Chad Carlson will compete for either third or fifth Saturday, depending on the outcome of his first match. Carlson qualified for Saturday competition by pinning Jeff Glos, Calloway in 2:35; defeated Shane Keeton, Humbolt 4-2; lost to Matt Rogers, Mullen 6-0.

125 lbs. — Doug Heinemann finished the tournament 2-2. Heinemann won his first decision over Andrew Puls, Elwood, 6-3; lost 6-1 decision to Ray Knott, Weeping Water.

## Bears rip up Wausa

WAUSA - To say the Laurel-Concord boys dismantled Wausa Friday night might not do Laurel-Concord justice, but dismantle Wausa, they did.

Laurel-Concord won the contest 86-39 as all of the Bear players got to see action. Laurel-Concord jumped to a 21-8 lead after one and cruised to a 45-19 halftime advantage.

"Wausa has a lot of young kids," said Laurel-Concord Coach Mark Hrabik said. "They've struggled on-again, off-again all year. We were pretty well-balanced scoring."

Scorers for Laurel-Concord were led by Todd Erwin, who had 18 points in the winning effort. Matt Jonas and Matt Felber each put in 13 points and John Schutte had 14. Shawn Arens scored nine for the Bears while Jon Pehrson had seven. Craig Bethke, Scott Heydon and Bruce Haifch each had two.

Leading scorer for Wausa was John Baue with 14 points.

Also making things seem easy for Laurel-Concord was 14 rebounds by Schutte and Erwin's seven assists. Total team rebounding showed Laurel outplaying Wausa by a 45-26 advantage. Wausa also suffered from 27 turnovers to Laurel's 10.

The win improves Laurel-Concord's record to 15-5 on the season.

## Winside falls short

WINSIDE - Despite being down by only seven points with about three minutes left in the game, the Winside Wildcats couldn't quite manage the win as Newcastle beat Winside 65-50 in action Friday night.

Led by the scoring of Rick Stark, with 19, Newcastle turned the ball over only six times in the contest to Winside's 13 and averaged better from the charity stripe, hitting 12-of-21, while Winside managed 13-of-24.

"It was a lot closer than the score indicated," Winside Coach Randy Geier said. "Our kids played really hard."

Scoring for the Wildcats was led by Randy Prince with 24. Mark Bruggger scored nine in the effort, while Matt Brogren, Cory Jensen and John Hancock each had five apiece. Jason Paulsen rounded out Winside's scoring with two.

Water; defeated Craig Brockmier, Eustis-Barnum 10-4 in overtime; lost 7-0 decision to Walt Aschof, Osmond.

130 lbs. — Jason Maquire finished the tournament 1-2. Maquire lost by technical fall to Darick Gallant, Clay Center; defeated Pat Russell, Mullen 12-5; lost by cal fall to Darrin Waddington, Sheldon.

135 lbs. — Max Kant will compete for championship honors Saturday. Kant pinned Kenis Byam, Ansley in :32; won 9-3 decision over Brandon Potter, Wilcox; won 11-7 decision over Rusty Kaps, Oshkosh.

140 lbs. — Shane Frahm will compete for either third or fifth Saturday, depending on the outcome of his first match Saturday due to rather an odd circumstances from an official's controversy. Frahm won his first match 12-2 over Jason Woodcock, Axtell; pinned Ray Fisher, Bertrand in 3:38; lost in the semi-finals in overtime to Alan Orf, Meridian 18-15. Apparently, at the end of regulation, the score was in Orf's favor but the referees could not agree on the results. After a five minute discussion, Frahm was awarded the win. Then, 10 to 15 minutes later, Winside Coach Paul Sok was notified the match was being reviewed and that resulted in a 13-13 tie. Following Kruger's match at 171 lbs., Frahm and Orf wrestled overtime period, which resulted in Frahm's loss.

145 lbs. — Jason Bergstadt finished the tournament 0-2.

152 lbs. — Jeff Gallop finished the tournament 1-2. Gallop lost his first match 4-2 to Alan Coffey, Dorchester; pinned Dustin McCleary, Anselma-Merna in 4:21; and lost 2-1 to Mike Knott, Weeping Water.

171 lbs. — Jason Krueger will compete Saturday for either third or fifth, depending on the outcome of his first match that day. Krueger pinned Dennis Jameson, Amherst in 5:33; pinned Brent Borley, Dorchester in 2:30; lost 10-7 decision to Jason Statz, East Butler.

189 lbs. — Trevor Topp will compete Saturday for third or fifth place, depending on the outcome of his first match Saturday. Topp won 7-2 over Ryan Cross, Harrisburg; lost 6-1 decision to Jason Searle, Harvard; won 5-2 overtime decision over Richard Licking, Mullen; won by pin over Brian Mofat, Oshkosh in 2:39.

275 lbs. — Brian Thompson will wrestle for championship honors Saturday. Thompson won by pin over Lance Somer, Calloway in 4:2; won 9-5 decision over Jack Thayer, Republican Valley; defeated top seed James Hasset, Mullen 13-8.

More results will follow in Thursday's Wayne Herald.

Leading rebounder for the Wildcats against Newcastle was Brogren with 16. Hancock, the other leading rebounder for Winside, pulled eight off the boards.

The third quarter seemed to be the telling point for Winside, however. The Wildcats were able to stay close through the first half, down by only three at 16-13 after one and down by four at halftime, 29-25. But in the third period, Newcastle seemed to turn up the heat, outscoring the Wildcats 16-9 for a 45-34 advantage after three.

Game time is 6:30 p.m.

## Wayne Bowling

Senior Citizens

On Tuesday, Feb. 13, 24 senior citizens bowled with the Charles McDermott team defeating the John Dall team, 5548-5344. High series and games were bowled by: Richard Carman, 578-199; Warren Austin, 547-201; Don Sund, 531-193; Winton Wallin, 515-181; Melvin Magnuson, 501-197; Lee Tietgen, 493-182; Otto Baier, 486-185; Jim Sturm, 478-178; Buss Schroeder, 475-177; Swede Hailey, 463-177; Charles Denesia, 461-190; Duane Creamer, 457-166; Darrell Powley, 455-181; Harry Mills, 450-201; Don Luft, 446-164; Bill Stipp, 445-166; Milton Matthew, 443-181.

On Thursday, Feb. 15, 21 senior citizens bowled with the Milton Matthew team defeating the Bill Stipp team, 5089-4983. High series and games were bowled by Lee Tietgen, 622-221; Warren Austin, 550-192; Jim Sturm, 535-200; Duane Creamer, 527-181; Melvin Magnuson, 490-188; Richard Carman, 486-177; Milton Matthew, 483-173; Charles McDermott, 474-189; Grdon Nurenberger, 464-185; Harry Mills, 454-157; Dale Gutshall, 446-165; Winton Wallin, 445-152.

**LANIER**

is proud to introduce

**MICHAEL SCOTT**

as our sales associate in Northeast Nebraska, residing in Wayne and specializing in copiers & facsimile systems.

1-800-221-0604

**CAPITAL BUSINESS SYSTEMS, INC.**

**GAY THEATRE**

A DON MUTH FILM

**All Dogs Go to Heaven**

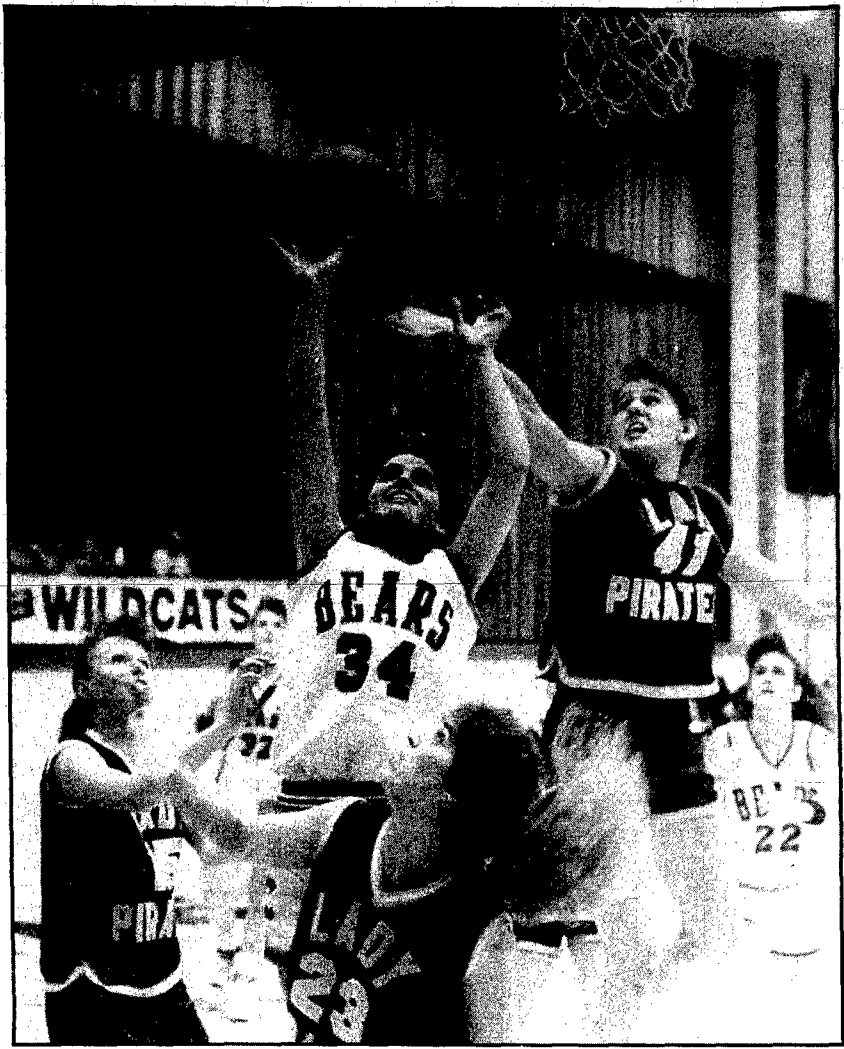
Saturday, Sunday Matinee 2 pm only  
Kids Get A Free Mini Poster while supplies last...

**Steel Magnolias**

A TRI-STAR RELEASE

PG

Starts Fri. Feb. 16 Nightly at 7:20 pm  
Late Shows Fri. Sat. Tue. 9:20 pm



Photography: Mark Crist

**LAUREL-CONCORD'S AMY NEWTON** is surrounded by players from Emerson-Hubbard as she tries to go inside with a shot. Laurel-Concord went on to lose the district game 64-49 in action Thursday night at Rice Auditorium.

## Lady Bears end season at districts

WAYNE - After finding themselves down by 16 at the half, the Laurel-Concord Lady Bears didn't quite have enough to make a comeback in the first round of district action at Rice Auditorium Thursday night as Emerson-Hubbard won the contest 64-49.

The Lady Pirates, led by an all-around effort by leading-scorer Leah Fuchser, with 32 points, watched as Laurel-Concord jumped to an early 4-0 lead but after three times down the court, Emerson-Hubbard took a 7-4 advantage midway through the first

period and never trailed from then on.

Then, for Laurel-Concord, the nightmare began.

Emerson-Hubbard went on a 21-4 run to start the second period, jumping to a 33-13 advantage just before the half. Laurel-Concord was able to pull within 16 by half by strong defensive play.

Comments from Laurel-Concord coach Mike Zimmerman were not available after the game.

Scoring for the Lady Bears was led by Amy Adkins with the only

figures with 21. Amy Newton dished in eight in the effort and Sherri McCorkindale with seven. Additional scorers for Laurel-Concord included Heather Thomas with six, Sherri Hangman with four, Bree Bebee with two and Amy Peters with one. No other Laurel-Concord players scored.

Scoring for Emerson-Hubbard was again led by Fuchser with 32, Cathy Schwarten poured in 13 and Cathi Oetken had eight. Brenda Langmack had seven and Rosalynn Krahrmer had four. No other Lady Pirates scored.

## Wayne loses game Schuyler tops WHS by one

Missed opportunities could best describe the Wayne Lady Blue Devil's 32-31 loss at Schuyler Thursday night as Wayne suffered from 13 turnovers in the first half and hit only three of 12 from the charity stripe.

"We didn't play well until the fourth period," Wayne Coach Marlene Uhing said. "We hurt ourselves again with about 1:25 left in the game when we fouled one of their players. After she hit the first free throw, she missed the second and they got the rebound, so we had to foul again."

That's not to say that Wayne didn't have some good efforts from some of its players. Heidi

Reeg led the team in scoring with 15 points and pulled down 13 from the boards. As a team, Wayne pulled down 32 rebounds to Schuyler's 28, but the Lady Blue Devils seemed unable to convert the extra basket they needed.

"We waited too long before we became aggressive on offense," Uhing said. "There was a lot of people going 1-on-1 but we just didn't execute."

Another problem Wayne faced was Schuyler was able to get off about 10 more shots in the contest.

Shooting from the line, Wayne converted 25 attempts into 13 points while Schuyler was six for 18

tries. Leading scorer for Schuyler was Tami Kanatz with 13.

In junior varsity action, Wayne cruised past Schuyler 42-29. Leading the Lady Blue Devil's in scoring was Kim Kruse with nine.

Scoring for Wayne was, again, H. Reeg with 15, Teresa Ellis with six, Jennifer Hamm with four and Liz Reeg and Erin Pick scored three each. No other Wayne players scored in the contest.

Next action for the Wayne girls is their district game at Norfolk. Wayne will play West Point Tuesday at 6:15 p.m. The Lady Blue Devil's record is 6-14 and it will give them a seventh seed at districts.

## Winside season ends Coleridge wins game in fourth

AREA - Going into the fourth quarter of Thursday's D-1 game at Randolph between Coleridge and Winside, it looked like Winside might upset the fifth ranked team in D-1 ratings. That is, until the fourth quarter.

"We tried to stay with them and we were within nine going into the fourth, but they just took over," Winside Coach Paul Giesselmann said.

Coleridge led 34-23 going into the fourth quarter, but outdistanced the Wildcats 19-4 in the fourth period to advance in district play. For Winside, the loss ended their season at 11-7.

Coleridge also dominated the Wildcats on the boards. Coleridge held a 49-36 advantage in rebounds and pulled down 22 of the offensive boards. Winside also turned the ball over 22 times to Coleridge's 10.

"The biggest thing was we played good defense," Giesselmann said. "But we shot only 33 percent on offense. We just couldn't get anything to fall, especially in the fourth period."

Scoring for Winside was led by Jenni Topp with eight. Wendy Rabe scored seven in the effort and April Thies scored five. Rounding out Winside's scoring was Kelly Pichler with four and Holly Holdorf with three. Leading scorer for Coleridge was Marcy Frerichs with 13.

Rebounding for Winside was led by Topp and Jenny Jacobsen, each with 10 off the boards. Rabe



Photography: Judi Topp

**JENNI TOPP** attempts to block a Coleridge player's shot while teammates Jenny Jacobsen, April Thies and Wendy Rabe await a possible rebound.

grabbed six from the boards. "The girls would like everyone to know that they appreciated the fan support they received this year," Giesselmann said. "They really appreciated it."

# ABC PRESCHOOL

## TEACHER: ARDATH OTTE

From left: Alyssa Peppmuller, Kayli Frick, Dena Kardell and Nathan Stevens. Missing is Jenna Beckman.

**The State National Bank and Trust Company**

Wayne, NE 68787 • 402/375-1130 • Member FDIC

Main Bank 116 West 1st • Drive-In Bank 10th & Main

# BOWLING at Melodee Lanes

**Wednesday Night Owls**

WON	LOST
4th Jugi	12
Electrolux Sales	13
Commercial 51 Bank	14
Ray's Locker	14
Gerhold Concrete	15
Wacker Farm Store	16
Melodee Lanes	17
Dekalb	17
Logan Valley Imp.	18
Windmill	20
Golden Sun	18
4th Jugi	20

High scores: Bob Wacker, 241; Duane Jacobsen, 570; Wacker Farm Store, 919; Electrolux Sales, 2524.

**Wednesday Night Ladies**

WON	LOST
Les Keenan, 201; Randy Barthol, 214; Quaine Jacobsen, 231; Bob Shellpeper, 205; Myron Schuett, 27-8 split.	

**Monday Night Ladies**

WON	LOST
Midland Equipment	17
Tom's Body Shop	17
Producer's Hybrid	14
Varsity-Dave's	14
Wayne Herald	14
State Nat'l Bank Ins Co.	13
Luff and Sons Truck	12
EI Toro	12
Swans	10
Hank's Custom Work	9 1/2
Bookworm	8
Ray's Locker	6

High scores: Cheryl Henschke, 228; Sandy Grove, 604; Producers Hybrid, 916-2506.

**Monday Night Ladies**

Sandra Gathie, 183; Sandy Grove, 237-217; Dawn Peters, 187; Tanya Erdleben, 194-530; Katy Hochstein, 484; Sandy Park, 187; Addie Jorgensen, 197-503; Judy Milligan, 518; Bev Sturm, 191; ReNe Saunders, 210-200-555; Cheryl Henschke, 496; Cleo Ellis, 203-192-546; Joni Holdorf, 192; Sue Denfon, 501; Jeanette Swanson, 186.	
--	--

**Saturday Night Couples**

WON	LOST
Kathol-Dorcy-Endicott	15
Lundahl-Jaeger-Hoff	13
Bebee-White	12 1/2
Soden-Krueger	12
Peters-Lueh	11 1/2
Denkiau-Matthes-Beza	8
Kay-Fredrickson-Robis	8
VandeVelde-Poutrle	8
Schulz-Blackburn	7
Munier-Owens-Suehl	5

High scores: Connie Endicott, 184-474; Layne Beza, 221-474; Denkiau-Matthes, 708; Peters-Lueh, 1854.

**Other Highlights**

Bob Gustafson, 206; Mary Ann Soden, 183; Stan Soden, 201; Deb Lundahl, 182.	
---	--

**Thursday Night Couples**

WON	LOST
Stipp-Twite	19 1/2
Metz-Hansen	19 1/2
Helthold-Kinslow-Sturm	19
Carman-Ostrander-Sch	17
Johsauer-Sever	16
Spahr-Rahn	16
Fuelberth-Li	15 1/2
Austin-Brown	14
Hansen-Luff	12
Bilstein-Friends	11 1/2

High scores: Warren Austin, 190; Renee Saunders, 208; Austin Brown, 643-1827.

**Thursday Night Couples**

Renee Saunders, 208-514; Anita Fuelberth, 190-540; Bev Sturm, 190-484; splits - John Fuelberth 5-7, Doris Stipp 4-7-10.	
---	--

**Junior League**

WON	LOST
Knock Outs	15
Nasty Bowler's	13
Dream Team	9
Pin Seekers	9
Ghosts	8
Alf's Alley Cat's	5
Ultra-Pink Bowler's	4
3 Nasty Boys	1

High scores: Mike Nicholson, 160-435; Dream Team, 702-2006.

**Junior League**

Nikki Newman, 117-311; Jason Kaup, 151-334; Shane Guilli, 148-422; Kelly Hammer, 148-386; Ryan Newman, 126-382; Amy Guilli, 138-309; Alicia Dorcy, 116-320; Jennifer Hank, 134-433; Tim Zach, 100; Nick Vanhorn, 125-318; Rick Endicott, 142-363; Tyler Endicott, 121-32; Adam Endicott, 128-338.	
---	--

**Hits 'N Misses**

WON	LOST
T.W.J. Feeds	20
Pa's Beauty Shop	18 1/2
Melodee Lanes	16
KTCH	15 1/2
Bill's GW	15 1/2
Wilson Seed	14
Greenview Farms	13
Grove Repair	12 1/2
Papa's Blue Ribbon	12
Wayne Campus Shop	11 1/2
The Windmill	11
Wayne Ve(C)linic	8

High scores: Judy Sorensen, 221-574; Pa's Beauty Salon, 928; Bill's G.W., 2558.

**Go Go Ladies**

WON	LOST
Pin Splinters	21
Bowling Belles	16
Double Shots	15
Lucky Strikers	13
Road Runners	13
Rolling Pins	9
Pin Hitlers	6
Gain Gals	3

High scores: Joni Holdorf, 238-582; Bowling Belles, 701-1990.

**Go Go Ladies**

Barbara Junck, 185-523; Joni Holdorf, 238-582; Anita Fuelberth, 198-548; Ella Luff, 189; Fran Nichols, 199-198-544; Rita McLean, 190-207-555; Splits - Betty Hank 2-7, Diane Miller 4-7-9-10.	
---	--

**City League**

WON	LOST
Melodee Lanes	19 1/2
Papa's Blue Ribbon	19
Lueder's & Woods	17 1/2
Clarkson Service	17
K.P. Constr.	15
L&B Farms	14
Wayne Greenhouse	14
Pac-N-Save	13
Ellingson Motors	12
Wayne Vets Club	11
Black Knight	8
Trio Travel	8

High scores: Merlound Lessmann, 256; Doug Rose, 636; Melodee Lanes, 1010-2806.

**City League**

Mary Dranselka, 214; Layne Beza, 227; Doug Rose, 235-223; Val Kienast, 202-206; John Rebensdorf, 203; Lee Tielgen, 211; Scott Brummond, 231; Ken Prokop, 218; Dean Blutein, 242; Loren Hammer, 212.	
---	--

**STATE NATIONAL BANK & TRUST CO.**

116 West 1st  
Phone 375-1130

**Make Us Your Headquarter For Prescriptions & Photo Supplies**

**GRIESS REXALL**



**Dianne Jaeger**  
296-4504

**LITTLE KIDS WRESTLING**

Members of the Winside little kids junior wrestling committee held a meeting Feb. 8 at the high school with Dean Mann, president, opening. The secretary/treasurer reports were given.

Election of officers was held. They are Doug Jaeger, president; Dean Krueger, vice president; Joni Jaeger, secretary/treasurer; Teri Bowers, scholarship chairman; and Rita Magwire, publicity.

Items discussed for this year included each wrestler will pay his own way to all 1990 tournaments; the coaches are to be the only ones on the mats with the wrestlers; Judy Jacobsen, Teri Bowers and Rita Magwire will be in charge of "badge making" during the tournament; the school gym has been approved for use for a March 10 Winside tournament; and practice will begin Tuesday, Feb. 27 and be every Tuesday; and Thursday in the high school gym from 6:30-8 p.m.

Committee chairmen for Winside's March 10 tournament are Judy Jacobsen, Caroline Rabe and Rita Magwire, concession stand; Dean Krueger and Mike Thompson, entry fee; Ray Jacobsen and Randall Bargstadt, ticket takers; Dave Jaeger, Brian Hoffman and Myron Miller, weigh-in; Randy Gubbels, announcer; Joni Jaeger, head table; Janie Koch and Kim Sok, wall charts; Dan Bowers, Jim Rabe and Doug Jaeger, table scorers; Paul Sok and Tom Koch, mat equipment and referees; and Stacy Bowers, match runner.

Set-up for the tournament will be March 9 at 7 p.m. All parents of wrestlers should contact one of the committee chairmen to help.

Randall Bargstadt will donate a half hog for the concession stand. Tournament entry fee is \$3.

Tournament breakdown by division is preschool-kindergarten, four man bracket; first and second, four man bracket; third and fourth, four man bracket; fifth and sixth, eight man bracket; and seventh and eighth, eight man bracket. Four medals will be awarded per bracket.

Anyone planning on attending the Feb. 24 tournament should contact Leon Koch before Feb. 22. A schedule of other tournaments will be run later.

Last year's scholarship committee members, Teri Bowers, Peggy Behmer, Joni Jaeger, Caroline Rabe, Karmon Lienemann, Rita Magwire and Cheryl Mann, awarded scholarships to Wendy Boldt, Cam Behmer, Rhonda Suehl and Mary Brugger.

**CHURCH WOMEN**

Dorothy Nelsen, president, conducted the Tuesday United Methodist Church Women meeting with nine members answering roll call. The secretary and treasurer reports were given. Thank yous were read from Elsie Reed and NECADE (Northeast Council Against Drugs).

The adopted district officer, Cathy Munter, will be at the Sept. 11 meeting instead of in July.

Lent Bible study classes on "Intercessory Prayer" will start Tuesday, Feb. 27 at 2 p.m. and again at 7:30 p.m. for seven weeks on Tuesdays.

March 2 has been set as "World Day of Prayer."

Sunrise Easter breakfast was discussed. The Rev. Marvin Coffey was honored for his birthday and presented a corsage for missions. He also gave the call to prayer and

self denial program "The Potential of the Common Disciple." A special offering was taken.

Dorothy Nelson was hostess. The next meeting will be Tuesday, March 13 for a 2 p.m. Bible study. Dottie Wacker will be hostess.

**PANCAKE FEED**

Approximately 150 persons attended the annual Valentine's day pancake feed hosted by the Winside Community Club last Wednesday evening.

Corinne Morris of Corinne's Costumes had a display of centennial clothing available to rent.

Members of the 2-4-7 Club drew Goldie Selders' name for a hand crocheted afghan. The club donated \$141.50 in profits from afghan ticket sales to the centennial fund.

**BEAR CUB SCOUTS**

Joni Jaeger met Tuesday with seven Bear Cub Scouts. They painted masks and made placemats for the Blue and Gold Banquet.

Doug Aulner served treats. The boys will be selling petunias the second or third Saturday of May as a money making project. They will cost 75¢ for four plants. Orders placed prior to March 1 will be guaranteed their quantities. The boys will deliver door to door in the village of Winside. Funds will be used for summer camp. Call Joni Jaeger 286-4553 to place orders.

Their next meeting will be tomorrow (Tuesday) at the elementary school to practice their skit. Mark Bloomfield will bring treats.

**PAGEANT COMMITTEE**

All members of the Winside pageant committee met Monday with Lena Miller. They completed an outline of all business and activities for the past 100 years. The next meeting will be Monday, March 12 with Lena Miller at 7 p.m.

**BRIDGE CLUB**

The Charles Jacksons hosted the Tuesday Night Bridge Club on Feb. 13 with Dr. and Mrs. N.L. Ditman as guests. Prizes were won by Dottie Wacker, Irene Ditman and Art Rabe. The next meeting will be Tuesday, Feb. 27 at the Don Wackers.

**TOWN AND COUNTRY**

Marilyn Morse hosted the Tuesday Town and Country Club meeting with nine members present. Ten point pitch was played with prizes going to Bonnie Frevert, Hazel Niemann and Audrey Quinn. The next meeting will be Tuesday, March 13 with Carol Jorgensen.

**SENIOR CITIZENS**

Approximately 27 senior citizens met Monday at the Legion Hall. They watched a video movie on America, then played cards. Hostesses were Leora Imel and Elsie Burris. The next meeting will be today (Monday) in the Legion Hall at 2 p.m.

**SCHOOL CALENDAR**

Tuesday, Feb. 20: Boys basketball districts at Randolph.

Thursday, Feb. 22: Boys basketball at Randolph.

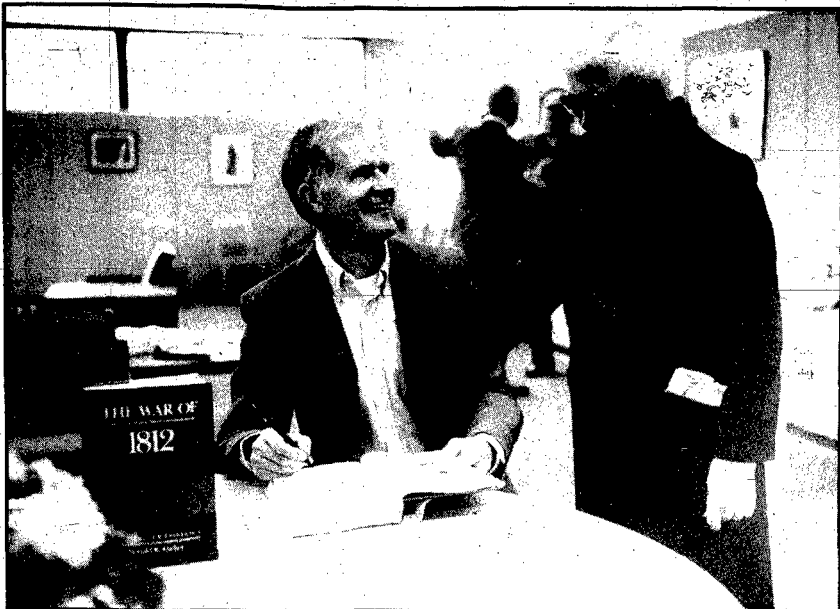
Saturday, Feb. 24: Conference speech contest, Winside.

The Bill and Pat Burris family returned home Monday from a nine day vacation in Kansas City and Florida. In Kansas City they visited the Truman Library and home and went to the miniature museum. In Florida they stayed at the Warren Holtgrew home and attended the wedding of Della Holtgrew and Karl Warner on Feb. 4. They also took in Disney World while there.

the low-income by applying weatherization materials and practices to their homes. This program applies to either rented or owned homes.

Eligible applicants must meet income guidelines as established by the federal government. There is no cost to the applicant for the weatherization work. The elderly, handicapped and homes with small children are a priority.

For more information on weatherizing your home under this program, call Goldenrod Hills Community Action Agency at (402) 529-3513.



Photography: Barry Dahlkoetter

**Book signing**

**DR. DONALD HICKEY**, professor of history at Wayne State College, shares a light-hearted moment with Laura Franklin, a former English instructor at Wayne State, during his book signing session. Dr. Hickey's book, "The War of 1812: A Forgotten Conflict," was published last year by the University of Illinois.

**Office has project in progress**

The Wayne County Extension Office is currently cooperating in a retail consumer marketing research project. The goal of the project is to track changing consumer purchasing trends in rural communities. There are 17 other states participating in providing information. The information is being collected by holding group focus interviews where eight to 12 people set in a closed session and share their views on purchasing various consumer goods. All information is held in strict confidence and no questions are directed toward any specific retail or service business. The questions are kept general and area-wide in nature.

Two group focus interviews have been held in Wayne; one in December for retail merchants and in January with a group of college students. Two more interview

groups are needed to represent the cross section of Wayne consumers. The first will be for the age group 25 to 55.

"We are targeting the person in the household that does most of the shopping for the family in the areas of food, household supplies, clothing and entertainment," said county extension agent Rod Patent. "We would like both male and female participants. We do ask that they be the principle shopper of the family and that they or another family member not be directly involved in a business that provides consumer goods. This session is scheduled for 7:30 p.m. on Feb. 19 in the Courtroom located on the second floor of the Courthouse.

The second group is 55 and older, either single or married,

male or female, but again needs to be the principle shopper in the household.

"We prefer that they or close family members (spouse or children) not be involved in a retail consumer business. This session will be held at 9 a.m. on Feb. 20 at the Wayne Senior Center," Patent added.

The results of the project will be shared at a later date with the Wayne community. "Our goal is to provide the information to the community," Patent said.

If you are interested in participating, call the Extension office at 375-3310. Pre-registration for both sessions is required. The office will be closed in Wayne on Monday, Feb. 19 for President's Day, but you may call 584-2234 on Monday.

**Beef weigh and tag day scheduled**

Weigh and tag day for Wayne County 4-H market beef project animals will be held Saturday, Feb. 24 from 8:30 to 11 a.m. at the Wayne Veterinary Clinic located east of Wayne.

Project animals to be used in the Pens of Three market beef project will also be weighed and tagged that day.

Four-H members may also have their animals implanted and noseprinted at no additional charge. Animals that may be shown at Ak-Sar-Ben, State Fair or the Norfolk Animal Exposition must be noseprinted.

Weighing, tagging and identifying the market beef animals will enter them in the rate of gain contest at the Wayne County Fair in August.

**Property Transfers**

Feb. 15 — Neal and Betty Rueter to Jon A. and Sherry L. Haase, lots 1 through 8 in block 10 of the College Hill first addition to Wayne. D.S. \$37.50.



Christopher Childs

**Greenpeace activist to speak at Wayne State**

WAYNE - Greenpeace activist Christopher Childs will present a lecture on his organization's non-violent approach to protecting wildlife and the environment Wednesday, Feb. 28, at 8 p.m., in Ramsey Theatre at Wayne State College. The event is sponsored by the Student Activities Board and is open to the public.

In this presentation, Greenpeace comes alive through eloquent words and compelling photographic images. The audience will visit Antarctica, the last remaining unspoiled continent — and learn how Greenpeace is working to halt the exploitation of that region, and its heroic global efforts to save endangered species such as whales, dolphins, sea turtles, seals, penguins and kangaroos.

Childs will share personal experiences of participating in Greenpeace actions and the continuing story of how this international network of people — bound by a common belief — are effecting planetary changes of epic proportions.

Greenpeace has been uniquely effective in marshalling world-wide opinion in support of legislation, treaties and policies which protect life on earth.

**News Briefs**

**Pflueger honored by Jaycees**

AREA - The Nebraska Jaycees have selected Paula Mitchell Pflueger as one of their Outstanding Young Nebraskans; an award given this past week at the Nebraska Jaycee Quarterly Convention held in Grand Island Feb. 9-11.

Pflueger had been chosen as the candidate to represent the Norfolk Jaycee Chapter in state competition. The Outstanding Young Nebraskan candidate was selected from young people in all fields of endeavor with the award based on their civic and professional accomplishments, personal growth and leadership and civic involvement.

Pflueger is a graduate of Norfolk High School and the University of Nebraska-Lincoln. She is an investment representative and branch manager of Edward D. Jones and Company in Wayne. She also provides continuing education programs for Northeast Community College.

Various honors have been awarded to Pflueger for her work with the American Heart Association, American Cancer Society, Miss America Scholarship Program, Prairie Hills Girl Scout Council and Wayne State College. She is a former Miss Nebraska.

Pflueger, and her husband Brad have one son, Chase.

**Medical assistants meet**

AREA - The Norfolk Chapter of Medical Assistants will meet Wednesday, Feb. 28 at 7:30 p.m. at the inservice room of the Lutheran Community Hospital in Norfolk. The election of new officers will take place during the business meeting.

The topic of the educational program will be "Premedication for Subacute Bacterial Endocarditis," with Gregory Sears, D.D.S., M.D., of Norfolk as the featured speaker.

Anyone involved in health care interested in coming to the meeting is encouraged to attend.

**Industrial arts to have open house Feb. 27**

WAYNE - The Wayne State College applied science division will host an open house and industrial technology seminars for the dedication of its industrial technology laboratory on Tuesday, Feb. 27, from 9 a.m. to 3 p.m. in Benthack Hall at Wayne State.

The laboratory, which includes 11 modules, will be used to teach future industrial technology instructors how to provide instruction in a laboratory organized in modules. Dr. Donald Mash, WSC president, will dedicate the laboratory at 9:30 a.m.

Topics included in the seminars are desktop publishing, transportation activities, computer aided drafting, CNC/CAM, lasers and fiber optics, European cabinetmaking, hydraulics and pneumatics and art glass.

The seminars will be divided into four time periods to allow those attending to participate in several of the activities planned.

**Agency wins weatherization grant for energy assistance**

Weatherization Funds, of \$155,508 have been granted to Goldenrod Hills Community Action Agency by the Nebraska Energy Office under the 1990 Low Income Energy Assistance Program (LEAP).

Goldenrod Hills Community Action Council's Weatherization Program serves a 14 county area including the counties of Antelope, Burt, Cedar, Cuming, Dakota, Dixon, Dodge, Knox, Madison, Pierce, Stanton, Thurston, Washington and Wayne.

The purpose of the Weatherization Program is to help lower heating and cooling costs for

**Obituaries**

**Mildred Dangberg**

Mildred Dangberg, 64, of rural Wayne died Thursday, Feb. 15, 1990 in Sioux City, Iowa.

Services will be held Monday, Feb. 19 at 2 p.m. at St. Paul's Lutheran Church in Winside. The Rev. Jeffrey Lee will officiate. Visitation was scheduled for 3-9 p.m. Saturday and 9 a.m.-9 p.m. Sunday at the Schumacher Funeral Home in Wayne.

Mildred Loretta Dangberg, the daughter of Rudolph and Lena Swanson, was born Aug. 2, 1925 at Concord. She was baptized and confirmed at the St. Paul's Evangelical Lutheran Church in Concord. She attended rural schools near Concord. She married Fred Dangberg on June 21, 1947. The couple farmed in the Wayne area. Fred died in 1979. She was a member of St. Paul's Lutheran Church in Winside, was active in community projects and the bowling league.

Survivors include four daughters, Sherree Dangberg of Denver, Colo., Mrs. David (Lyla) Moulden of Denver, Colo., Lorree Dangberg of Wayne and Kerri Dangberg of Norfolk; one grandson, Joshua Moulden; and five sisters, Mrs. Rose Thies of Winside, Mrs. Elsie Mattes of Allen, Mrs. Edna Dangberg of Wayne, Mrs. Lillie Lippolt of Allen and Mrs. Gerthy Johnson of Norfolk.

She was preceded in death by her parents and her husband. Burial will be in the Pleasantview Cemetery in Winside with Schumacher Funeral Home in charge of arrangements.

**THE WAYNE HERALD & MARKETER**  
Present

**HOMEMAKERS**

**SCHOOL 1990**

**THURSDAY**  
**MARCH 15, 1990**

Booth Displays at 5:00 p.m. — Show at 7:00 p.m.  
Wayne City Auditorium

We're presenting an entertaining and informative program featuring

**JANA LAMPLLOT**  
Home Economist from Lincoln (formerly from Pender).  
The 2 1/2 hour show is free to the public.

• BOOTH DISPLAYS BY AREA MERCHANTS  
• COOKING DEMONSTRATIONS • PRIZES  
• FREE SACK OF 'GOODIES' TO EVERYONE • PLUS MORE!

JANA LAMPLLOT

Mrs. Edward Fork  
585-4827

**LADIES AID**  
Six members and Pastor Christopher Roepke were present Wednesday when the St. Paul's Lutheran Ladies Aid met at the church fellowship hall.

Mrs. Arthur Cook led devotions and was hostess for the day. The group read Psalm 25, an Epiphany prayer and had group singing, accompanied by Mrs. Edward Fork.

Mrs. Fork conducted the business meeting. Mrs. Arnold Junck reported on the last meeting and Mrs. Arthur Cook was acting treasurer.

The local society will serve a noon dinner for the Pastors Circuit Conference that will be held Tuesday, March 6 at the church. Those in charge of planning are Mrs. Edward Fork, Mrs. Ernest Junck, Mrs. Arnold Junck and Mrs. Gerry Hurlbert.

Mrs. Edward Fork and Mrs. Arnold Junck attended the LWML officers meeting that was held in Immanuel Lutheran Church at Laurel Jan. 30. The Wayne Zone LWML Spring Workshop will be held at Altona on Tuesday, April 24. The mission gathering will be at Hooper June 11-12. The local society will make a baby quilt for their donation. The LWML Fall Rally will be at Immanuel in Wakefield on Oct. 16. The Nebraska District North Discippling Women Seminar will be held at King of Kings Lutheran Church in Omaha Feb. 16-17.

Mrs. Dennis Junck, Christian growth leader, read an article taken from "School Times," a magazine that is published at Scottsdale, Ariz. and was sent to schools. Tami Jenkins of Carroll, who spent several months in Arizona, is a correspondent for the magazine.

Mrs. Junck also read "What is Valentine's Day" and read "Someone Special."

Pastor showed a video of Martin Luther Heretic, the first in a series of four and led discussion on Martin Luther's life.

The next meeting will be March 14 when Mrs. Edward Fork will serve.

The meeting closed with the Lord's Prayer.  
**STAR EXTENSION CLUB**  
Mrs. Don Liedman hosted the

Star Extension Club Tuesday evening. There were six members and one guest, Mrs. Alice Davis.

Mrs. Liedman, president, opened the meeting with the flag salute. Mrs. John Rees reported on the last meeting and read the treasurer's report. Roll call was "My Favorite Valentine."

Mrs. Don Harmer was lesson leader and she had Mrs. Alice Davis demonstrate decorating sweat-shirts.

The club members will attend the Wayne cooking school for their March meeting.

Mrs. Randy Gubbels served.  
**SENIOR CITIZENS**  
Thirteen were present Monday when the Senior Citizens met at the fire hall for cards. Winners were Mrs. Arthur Cook and Mrs. Adolph Rohlf.

The group signed a thank you card for Mr. and Mrs. Lynn Roberts, a get well card for Mrs. Paula Paus-tian and a sympathy card for the family of Mrs. Eulalia Pearson.

Mrs. Alice Wagner served and Mr. and Mrs. Adolph Rohlf will host the afternoon of cards today (Monday).

Nichole, eight year old daughter of Mr. and Mrs. David Owens, was honored for her birthday when her mother and Mrs. Ernie Paus-tian drove and took classmates to Wakefield Feb. 9 to roller skate. In the group were Beth Loberg, Kim Hurlbert, Joseph Paus-tian, Jennifer Schaffer, Ryan Hank, Lyndi Tietz, Erin Simpson and Chris Junck. The group closed the evening with a luncheon at the roller rink and Nichole opened her birthday gifts.

Kourtney, one year old daughter of Mr. and Mrs. Ed Schmale, was honored for her birthday when Jan. 26 evening and cooperative luncheon guests in the Schmale home were Mrs. Mary Schmale, Ferd, Ed, Lillian and Francis of Emerson; Janet Schmale, Doug Kimball and Mrs. Nelda Lueders, all of Norfolk; Mr. and Mrs. Lane Marotz, Mr. and Mrs. Lyle Marotz and Mr. and Mrs. Kevin Marotz, all of Hoskins; Mr. and Mrs. Ray Johnson of Wayne; Mr. and Mrs. Darrell French, Diane, Doug and David, Mr. and Mrs. Lennie Schmale and Mr. and Mrs. Todd Jenkins, all of Carroll. Janet Schmale baked the special birthday cake for her nephew.

**Hoskins News**

Mrs. Hilda Thomas  
565-4569

**A-TEEN CLUB**  
The A-Teen Home Extension Club met at the home of Mrs. Leslie Kruger on Wednesday. Mrs. Duane Kruger presided in the absence of the president and vice-president and opened the meeting with the flag salute and collect.

Roll call was "a Valentine that means a lot to me." Mrs. James Robinson read the report of the January meeting and gave the treasurer's report. Members discussed a special diet program and a new virus that is a serious threat to health.

Mrs. Leslie Kruger led in singing the birthday and anniversary song for Mrs. Vernon Hokamp. Members voted to contribute to the Pennies for Friendship Fund. The hostess gift was won by Mrs. Duane Kruger.

The afternoon was spent playing 10 point pitch with prizes going to Mrs. Leslie Kruger, Mrs. Irving Anderson and Mrs. James Robinson. The next meeting will be held on March 14 at the home of Mrs. Duane Kruger when Mrs. Walter Fleer will present the lesson, "Women on Wheels."

**20TH CENTURY CLUB**  
The 20th Century Club met at the home of Mrs. Richard Doffin Sr.

Tuesday for a no-host French ethnic meal. Mrs. Bill Willers, president, opened the meeting and read two articles, "For My Valentine" and "Valentine Memories."

For roll call, members had a paper valentine exchange. Mrs. Don Johnson read the report of the previous meeting and gave the treasurer's report. Plans for an April tour were discussed.

Mrs. Alvin Wagner will be hostess for the next meeting on March 13.

**HOSKINS SENIORS**  
The Hoskins Seniors met at the fire hall Tuesday afternoon with 16 present. Mrs. Irene Fletcher was coffee chairman for the no-host lunch. Card prizes went to Ernest Fenske, Mrs. George Wittler and Mrs. Hilda Thomas.

Mr. and Mrs. Carl Hinzman served ice cream in honor of their birthdays. The next meeting will be on Feb. 27 with Mrs. Emil Gutzman, coffee chairman.

Mr. and Mrs. John Dumkrieger and Stacey of Storm Lake, Iowa were Feb. 10 weekend guests in the Mr. and Mrs. Ernest Fenske home. They also visited other area folks.

**Legal Notices**

**MINUTES WAYNE BOARD OF EDUCATION February 13, 1990**

The regular monthly meeting of the board of education was held in room 209 at the high school on Tuesday, February 13, 1990 at 7:30 p.m. Notice of the meeting and place of agenda were published in The Wayne Herald on February 8, 1990.

1. Approved minutes and bills.
2. Approved school calendar for the 1990-91 school year.
3. Re-elected principals for the 1990-91 school year.

4. Recognized the WEA as official bargaining agent for certified staff.

5. Approved frosholders petition from William Lubberstedt.  
Zach Propane, fuel - Carroll, 1,002.15; Zach Propane Service, fuel - Carroll, 718.80; AB Dick Products Co., maintenance & supplies, 2,198.63; Access Elevator Co., lift repair, 722.00; American Machine & Tool, tools, 55.40; American Sch Bd Journal, renewal, 322.00; AT&T Information System, telephone, 120.85; Baker and Taylor Co., Chapter II, 321.50; Ben Franklin Store, keys, 2.84; Bill's G-Men, February disposal, 187.50; Brower School Bus Parts, bus parts, 6.06; Business Book, office supplies, 32.90; Carhart Lumber Co., upkeep buildings & supplies, 306.31; Carr Auto & Ag Supply, bus expense, 112.37; Citicorp North America, telephone, 248.70; City of Wayne, utilities, 3,469.81; DC Health and Educators Plus, prin. office expense, 4.95; Ellington Motors, bus repair, 354.31; ESU 1, audio-visual repair, 69.45; Evan Bennett, bookies - MS style show, 5.90; Eastern Nebr. Telephone Co., telephone - Carroll, 35.13; FR Haun, admin. expense, 92.41; Final Touch, picture frame repair & glass, 8.00; Follett Library Book Co., Chapter II, 51.69; Fredrickson Oil Co., gasoline, 3,614.40; Gale Research Co., Chapter II, 217.39; Garrett Educational Corp., library books, 177.07; Harding Glass Industries, glass - trophy case, 231.81; Heikes Automotive Service, bus repair, 113.35; Holiday Inn, Chapter I, 53.77; Ideal Lighting, light bulbs, 285.00; Iowa Office Supply, Inc., repair, 75.00; J.W. Pepper of MN, band music, 201.95; Janice Liska, Chapter I - in-service, 49.50; Jay's Music, band music, 131.85; Jilly Janitorial Supply, custodial supplies, 63.25; Justens, Inc., diploma covers & inserts, 384.93; Karen F. Hansen, library workshop, 8.28; Kaups TV Service, building maintenance, 18.15; Koplin Auto Supply, bus parts, 81.56; Larry Sievers, mileage - choral clinic, 30.00; Malecki Music Inc., choir music, 65.11; Medical Economics Co., renewal, 52.00; Midwest Business Products, supplies, 5.80; Morris Machine Shop, maintenance & mat rack expense, 436.70; National College Funding, guidance, 29.55; Norfolk Office Equipment, maintenance agreement, 110.00; Northeast Nebr. Insurance, property insurance, 583.00; Office Connection, repair, supplies & computer h. 461.53; Olson's, exterminate, 80.00; Pat Straight, board of education expense, 9.30; Peoples Natural Gas Co., utility, 3,263.48; Perma-Bound, Chapter II, 46.25; Phi Delta Kappa, dues, 76.00; Phillips Petroleum Co., gasoline, 20.83; Pilsco, ind. arts equipment, 23.93; Precision Bearing Co., bus expense, 38.15; Prentice Hall School Div., textbooks, 66.28; Ray's Mid-Bell Music, band music, 106.59; Readup Inc., Chapter II, 575.95; Robert Jacobson Design, posters, 43.00; Rons Radio, CB radio, 69.95; SD 17 Activity Fund, entry fees, 115.00; NSBA Convention, 1,145.00; SD 17 Lunch Fund, federal & state reimbursement, 5,085.10; Sav-Mor Pharmacy, teaching & health supplies, 48.32; School Specialty Supply, prin. office expense, 39.00; Silver Burdett Press, Chapter II, 554.59; South-Western Publishing, teaching supplies, 53.61; St. of NE - Dept. of Labor, boiler inspection, 10.00; Starks Electric, maintenance, 33.25; Texas Instruments Inc., teaching supplies, 28.95; Tria Travel, Nat'l Teachers Convention, 1,178.00; U.S. West Communications, telephone, 551.21; Univ. Microfilms International, periodicals, 206.85; Valco Products Inc., custodial supplies, 208.39; Venture Six Enterprises, health supplies, 10.00; Wayne Co. Public Power Dist, utility - Carroll, 88.10; Wayne Derby Service, tire repair, 2.50; Wayne Family Practice Gp, asbestos physical, 115.00; Wayne Herald, office supplies & proceedings, 400.38; Wayne True Value, custodial & teaching supplies, 32.72; West Glenn Communications, audio-visual, 10.00; Western Paper and Supply, custodial supplies, 280.20; Word Works, return - shipping & handling, 14.50; Big Bear, repair - grounds equipment, 144.65; Carter Peterson, NASB workshop, 38.00; Charlie's Refrigeration, freezer repair, 150.00; F.R. Haun, board-negotiation conference, 190.18; Ideal Lighting, building maintenance, 48.82; Kenneth Dahl, NASB workshop, 40.00; Michele Mrsny, Professional workshop, 56.25; Office Connection, repair, 50.00; Quill Corp., teaching supplies, 66.68; S.D. 17 Activity Fund, trophy case - ind. arts, 185.38; Wigman Co., building maintenance, 58.12; A.B. Dick Products Co., repair & supplies, 397.06; Cheryl Kopperud, instructional travel, 5.40; Garrett Educational Corp., library books, 52.96; A.B. Dick, teaching supplies, 417.98; Donald Koenig, instructional travel, 22.95; Jay's Music, band music, 10.70; Malecki Music, band music, 39.51; Pac-N-Save, teaching supplies, 42.60.

TOTAL.....\$34,152.90  
**SINKING FUND**  
Terracon Consultants NE, Inc., West Elm. ad-

dilion expense, 1,200.00; Davis/Fenton/Stanford/Daring, West.Elem. addition expense, 3,598.95; Bruce Gilmore & Associates, Inc., land survey - West Elementary, 1,750.00.  
TOTAL.....\$6,548.95  
**DEPRECIATION ACCOUNT**  
University Publishing Co., lockers, 2,195.60  
Doris Daniels, Secretary (Publ. Feb. 19)

Abbreviations for this legal: Ex, Expense; Fa, Fee; Gr, Groceries; Mi, Mileage; Rr, Reimbursements; Rpt, Report; Sa, Salaries; Se, Services; Su, Supplies.

**WAYNE CITY COUNCIL PROCEEDINGS**

January 30, 1990  
Wayne City Council met in regular session at 7:30 p.m. on January 30, 1990. In attendance: Council members: Johnson, Liedau, Filter, O'Leary, Heier, Barclay, Fuelberth, Hansen; Attorney Ensz, Clerk Brummond. Absent: Mayor Marsh, Administrator Kloster.

Minutes of January 9, 1989 were approved. Council voted to approve the following claims:

- City of Wayne, Sa, 49185.14; Associated Technologies Ltd., Re, 44.55; AT&T, Re, 116.22; North Brigger, Sa, 222.00; Delma Carlson, Sa, 17.00; Colonial Chemical, Su, 195.30; Complete Computer, Su, 4.79; Crescent Electric, Su, 127.02; Culligan Water, Re, 143.80; DeWitt Grant Rockett, Sa, 217.25; Diamond Center, Re, 137.70; Diers Supply, Su, 629.99; Dutter, Lainsou, Su, 161.52; Electric Supply, Sa, 54.08; Ellington Motors, Re, 39.80; Flexcomp Planners, Fe, 132.00; Fremont Sanitation, Se, 2754.00; Gerhold Concrete, Su, 40.00; Harold Stolz Co., Re, 1355.00; Howard R. Green Co., Se, 564.35; Ident-Kit Co., Fe, 408.00; J.P. Cooke Co., Su, 44.56; Koplin Auto, Re, 37.96; Kriz-Davis, Su, 392.06; Robert Lane, Re, 128.00; Logan Valley Imp'l., Re, 14.36; William Mellor, Re, 222.00; Mentor Systems, Se, 17.50; Midwest Paper, Su, 41.77; Midwestern Paper, Re, 16.11; Nebraska Supreme Court, Re, 36.95; Norfolk Ink & Metal, Su, 14.44; Norfolk Office, Su, 19.95; Northeast Nebr. Ins., Re, 20000.00; Novelty Machine & Supply, Su, 36.04; Olds & Ensz, Se, 900.00; Pamida, Su, 31.03; Pecau Equipment, Su, 131.50; Keith Reed, Re, 159.50; R.W. Rice, Su, 54.08; Ellington Motors, Re, 39.80; Flexcomp Planners, Fe, 132.00; Fremont Sanitation, Se, 2754.00; Gerhold Concrete, Su, 40.00; Harold Stolz Co., Re, 1355.00; Howard R. Green Co., Se, 564.35; Ident-Kit Co., Fe, 408.00; J.P. Cooke Co., Su, 44.56; Koplin Auto, Re, 37.96; Kriz-Davis, Su, 392.06; Robert Lane, Re, 128.00; Logan Valley Imp'l., Re, 14.36; William Mellor, Re, 222.00; Mentor Systems, Se, 17.50; Midwest Paper, Su, 41.77; Midwestern Paper, Re, 16.11; Nebraska Supreme Court, Re, 36.95; Norfolk Ink & Metal, Su, 14.44; Norfolk Office, Su, 19.95; Northeast Nebr. Ins., Re, 20000.00; Novelty Machine & Supply, Su, 36.04; Olds & Ensz, Se, 900.00; Pamida, Su, 31.03; Pecau Equipment, Su, 131.50; Keith Reed, Re, 159.50; R.W. Rice, Su, 54.08; Ellington Motors, Re, 39.80; Flexcomp Planners, Fe, 132.00; Fremont Sanitation, Se, 2754.00; Gerhold Concrete, Su, 40.00; Harold Stolz Co., Re, 1355.00; Howard R. Green Co., Se, 564.35; Ident-Kit Co., Fe, 408.00; J.P. Cooke Co., Su, 44.56; Koplin Auto, Re, 37.96; Kriz-Davis, Su, 392.06; Robert Lane, Re, 128.00; Logan Valley Imp'l., Re, 14.36; William Mellor, Re, 222.00; Mentor Systems, Se, 17.50; Midwest Paper, Su, 41.77; Midwestern Paper, Re, 16.11; Nebraska Supreme Court, Re, 36.95; Norfolk Ink & Metal, Su, 14.44; Norfolk Office, Su, 19.95; Northeast Nebr. Ins., Re, 20000.00; Novelty Machine & Supply, Su, 36.04; Olds & Ensz, Se, 900.00; Pamida, Su, 31.03; Pecau Equipment, Su, 131.50; Keith Reed, Re, 159.50; R.W. Rice, Su, 54.08; Ellington Motors, Re, 39.80; Flexcomp Planners, Fe, 132.00; Fremont Sanitation, Se, 2754.00; Gerhold Concrete, Su, 40.00; Harold Stolz Co., Re, 1355.00; Howard R. Green Co., Se, 564.35; Ident-Kit Co., Fe, 408.00; J.P. Cooke Co., Su, 44.56; Koplin Auto, Re, 37.96; Kriz-Davis, Su, 392.06; Robert Lane, Re, 128.00; Logan Valley Imp'l., Re, 14.36; William Mellor, Re, 222.00; Mentor Systems, Se, 17.50; Midwest Paper, Su, 41.77; Midwestern Paper, Re, 16.11; Nebraska Supreme Court, Re, 36.95; Norfolk Ink & Metal, Su, 14.44; Norfolk Office, Su, 19.95; Northeast Nebr. Ins., Re, 20000.00; Novelty Machine & Supply, Su, 36.04; Olds & Ensz, Se, 900.00; Pamida, Su, 31.03; Pecau Equipment, Su, 131.50; Keith Reed, Re, 159.50; R.W. Rice, Su, 54.08; Ellington Motors, Re, 39.80; Flexcomp Planners, Fe, 132.00; Fremont Sanitation, Se, 2754.00; Gerhold Concrete, Su, 40.00; Harold Stolz Co., Re, 1355.00; Howard R. Green Co., Se, 564.35; Ident-Kit Co., Fe, 408.00; J.P. Cooke Co., Su, 44.56; Koplin Auto, Re, 37.96; Kriz-Davis, Su, 392.06; Robert Lane, Re, 128.00; Logan Valley Imp'l., Re, 14.36; William Mellor, Re, 222.00; Mentor Systems, Se, 17.50; Midwest Paper, Su, 41.77; Midwestern Paper, Re, 16.11; Nebraska Supreme Court, Re, 36.95; Norfolk Ink & Metal, Su, 14.44; Norfolk Office, Su, 19.95; Northeast Nebr. Ins., Re, 20000.00; Novelty Machine & Supply, Su, 36.04; Olds & Ensz, Se, 900.00; Pamida, Su, 31.03; Pecau Equipment, Su, 131.50; Keith Reed, Re, 159.50; R.W. Rice, Su, 54.08; Ellington Motors, Re, 39.80; Flexcomp Planners, Fe, 132.00; Fremont Sanitation, Se, 2754.00; Gerhold Concrete, Su, 40.00; Harold Stolz Co., Re, 1355.00; Howard R. Green Co., Se, 564.35; Ident-Kit Co., Fe, 408.00; J.P. Cooke Co., Su, 44.56; Koplin Auto, Re, 37.96; Kriz-Davis, Su, 392.06; Robert Lane, Re, 128.00; Logan Valley Imp'l., Re, 14.36; William Mellor, Re, 222.00; Mentor Systems, Se, 17.50; Midwest Paper, Su, 41.77; Midwestern Paper, Re, 16.11; Nebraska Supreme Court, Re, 36.95; Norfolk Ink & Metal, Su, 14.44; Norfolk Office, Su, 19.95; Northeast Nebr. Ins., Re, 20000.00; Novelty Machine & Supply, Su, 36.04; Olds & Ensz, Se, 900.00; Pamida, Su, 31.03; Pecau Equipment, Su, 131.50; Keith Reed, Re, 159.50; R.W. Rice, Su, 54.08; Ellington Motors, Re, 39.80; Flexcomp Planners, Fe, 132.00; Fremont Sanitation, Se, 2754.00; Gerhold Concrete, Su, 40.00; Harold Stolz Co., Re, 1355.00; Howard R. Green Co., Se, 564.35; Ident-Kit Co., Fe, 408.00; J.P. Cooke Co., Su, 44.56; Koplin Auto, Re, 37.96; Kriz-Davis, Su, 392.06; Robert Lane, Re, 128.00; Logan Valley Imp'l., Re, 14.36; William Mellor, Re, 222.00; Mentor Systems, Se, 17.50; Midwest Paper, Su, 41.77; Midwestern Paper, Re, 16.11; Nebraska Supreme Court, Re, 36.95; Norfolk Ink & Metal, Su, 14.44; Norfolk Office, Su, 19.95; Northeast Nebr. Ins., Re, 20000.00; Novelty Machine & Supply, Su, 36.04; Olds & Ensz, Se, 900.00; Pamida, Su, 31.03; Pecau Equipment, Su, 131.50; Keith Reed, Re, 159.50; R.W. Rice, Su, 54.08; Ellington Motors, Re, 39.80; Flexcomp Planners, Fe, 132.00; Fremont Sanitation, Se, 2754.00; Gerhold Concrete, Su, 40.00; Harold Stolz Co., Re, 1355.00; Howard R. Green Co., Se, 564.35; Ident-Kit Co., Fe, 408.00; J.P. Cooke Co., Su, 44.56; Koplin Auto, Re, 37.96; Kriz-Davis, Su, 392.06; Robert Lane, Re, 128.00; Logan Valley Imp'l., Re, 14.36; William Mellor, Re, 222.00; Mentor Systems, Se, 17.50; Midwest Paper, Su, 41.77; Midwestern Paper, Re, 16.11; Nebraska Supreme Court, Re, 36.95; Norfolk Ink & Metal, Su, 14.44; Norfolk Office, Su, 19.95; Northeast Nebr. Ins., Re, 20000.00; Novelty Machine & Supply, Su, 36.04; Olds & Ensz, Se, 900.00; Pamida, Su, 31.03; Pecau Equipment, Su, 131.50; Keith Reed, Re, 159.50; R.W. Rice, Su, 54.08; Ellington Motors, Re, 39.80; Flexcomp Planners, Fe, 132.00; Fremont Sanitation, Se, 2754.00; Gerhold Concrete, Su, 40.00; Harold Stolz Co., Re, 1355.00; Howard R. Green Co., Se, 564.35; Ident-Kit Co., Fe, 408.00; J.P. Cooke Co., Su, 44.56; Koplin Auto, Re, 37.96; Kriz-Davis, Su, 392.06; Robert Lane, Re, 128.00; Logan Valley Imp'l., Re, 14.36; William Mellor, Re, 222.00; Mentor Systems, Se, 17.50; Midwest Paper, Su, 41.77; Midwestern Paper, Re, 16.11; Nebraska Supreme Court, Re, 36.95; Norfolk Ink & Metal, Su, 14.44; Norfolk Office, Su, 19.95; Northeast Nebr. Ins., Re, 20000.00; Novelty Machine & Supply, Su, 36.04; Olds & Ensz, Se, 900.00; Pamida, Su, 31.03; Pecau Equipment, Su, 131.50; Keith Reed, Re, 159.50; R.W. Rice, Su, 54.08; Ellington Motors, Re, 39.80; Flexcomp Planners, Fe, 132.00; Fremont Sanitation, Se, 2754.00; Gerhold Concrete, Su, 40.00; Harold Stolz Co., Re, 1355.00; Howard R. Green Co., Se, 564.35; Ident-Kit Co., Fe, 408.00; J.P. Cooke Co., Su, 44.56; Koplin Auto, Re, 37.96; Kriz-Davis, Su, 392.06; Robert Lane, Re, 128.00; Logan Valley Imp'l., Re, 14.36; William Mellor, Re, 222.00; Mentor Systems, Se, 17.50; Midwest Paper, Su, 41.77; Midwestern Paper, Re, 16.11; Nebraska Supreme Court, Re, 36.95; Norfolk Ink & Metal, Su, 14.44; Norfolk Office, Su, 19.95; Northeast Nebr. Ins., Re, 20000.00; Novelty Machine & Supply, Su, 36.04; Olds & Ensz, Se, 900.00; Pamida, Su, 31.03; Pecau Equipment, Su, 131.50; Keith Reed, Re, 159.50; R.W. Rice, Su, 54.08; Ellington Motors, Re, 39.80; Flexcomp Planners, Fe, 132.00; Fremont Sanitation, Se, 2754.00; Gerhold Concrete, Su, 40.00; Harold Stolz Co., Re, 1355.00; Howard R. Green Co., Se, 564.35; Ident-Kit Co., Fe, 408.00; J.P. Cooke Co., Su, 44.56; Koplin Auto, Re, 37.96; Kriz-Davis, Su, 392.06; Robert Lane, Re, 128.00; Logan Valley Imp'l., Re, 14.36; William Mellor, Re, 222.00; Mentor Systems, Se, 17.50; Midwest Paper, Su, 41.77; Midwestern Paper, Re, 16.11; Nebraska Supreme Court, Re, 36.95; Norfolk Ink & Metal, Su, 14.44; Norfolk Office, Su, 19.95; Northeast Nebr. Ins., Re, 20000.00; Novelty Machine & Supply, Su, 36.04; Olds & Ensz, Se, 900.00; Pamida, Su, 31.03; Pecau Equipment, Su, 131.50; Keith Reed, Re, 159.50; R.W. Rice, Su, 54.08; Ellington Motors, Re, 39.80; Flexcomp Planners, Fe, 132.00; Fremont Sanitation, Se, 2754.00; Gerhold Concrete, Su, 40.00; Harold Stolz Co., Re, 1355.00; Howard R. Green Co., Se, 564.35; Ident-Kit Co., Fe, 408.00; J.P. Cooke Co., Su, 44.56; Koplin Auto, Re, 37.96; Kriz-Davis, Su, 392.06; Robert Lane, Re, 128.00; Logan Valley Imp'l., Re, 14.36; William Mellor, Re, 222.00; Mentor Systems, Se, 17.50; Midwest Paper, Su, 41.77; Midwestern Paper, Re, 16.11; Nebraska Supreme Court, Re, 36.95; Norfolk Ink & Metal, Su, 14.44; Norfolk Office, Su, 19.95; Northeast Nebr. Ins., Re, 20000.00; Novelty Machine & Supply, Su, 36.04; Olds & Ensz, Se, 900.00; Pamida, Su, 31.03; Pecau Equipment, Su, 131.50; Keith Reed, Re, 159.50; R.W. Rice, Su, 54.08; Ellington Motors, Re, 39.80; Flexcomp Planners, Fe, 132.00; Fremont Sanitation, Se, 2754.00; Gerhold Concrete, Su, 40.00; Harold Stolz Co., Re, 1355.00; Howard R. Green Co., Se, 564.35; Ident-Kit Co., Fe, 408.00; J.P. Cooke Co., Su, 44.56; Koplin Auto, Re, 37.96; Kriz-Davis, Su, 392.06; Robert Lane, Re, 128.00; Logan Valley Imp'l., Re, 14.36; William Mellor, Re, 222.00; Mentor Systems, Se, 17.50; Midwest Paper, Su, 41.77; Midwestern Paper, Re, 16.11; Nebraska Supreme Court, Re, 36.95; Norfolk Ink & Metal, Su, 14.44; Norfolk Office, Su, 19.95; Northeast Nebr. Ins., Re, 20000.00; Novelty Machine & Supply, Su, 36.04; Olds & Ensz, Se, 900.00; Pamida, Su, 31.03; Pecau Equipment, Su, 131.50; Keith Reed, Re, 159.50; R.W. Rice, Su, 54.08; Ellington Motors, Re, 39.80; Flexcomp Planners, Fe, 132.00; Fremont Sanitation, Se, 2754.00; Gerhold Concrete, Su, 40.00; Harold Stolz Co., Re, 1355.00; Howard R. Green Co., Se, 564.35; Ident-Kit Co., Fe, 408.00; J.P. Cooke Co., Su, 44.56; Koplin Auto, Re, 37.96; Kriz-Davis, Su, 392.06; Robert Lane, Re, 128.00; Logan Valley Imp'l., Re, 14.36; William Mellor, Re, 222.00; Mentor Systems, Se, 17.50; Midwest Paper, Su, 41.77; Midwestern Paper, Re, 16.11; Nebraska Supreme Court, Re, 36.95; Norfolk Ink & Metal, Su, 14.44; Norfolk Office, Su, 19.95; Northeast Nebr. Ins., Re, 20000.00; Novelty Machine & Supply, Su, 36.04; Olds & Ensz, Se, 900.00; Pamida, Su, 31.03; Pecau Equipment, Su, 131.50; Keith Reed, Re, 159.50; R.W. Rice, Su, 54.08; Ellington Motors, Re, 39.80; Flexcomp Planners, Fe, 132.00; Fremont Sanitation, Se, 2754.00; Gerhold Concrete, Su, 40.00; Harold Stolz Co., Re, 1355.00; Howard R. Green Co., Se, 564.35; Ident-Kit Co., Fe, 408.00; J.P. Cooke Co., Su, 44.56; Koplin Auto, Re, 37.96; Kriz-Davis, Su, 392.06; Robert Lane, Re, 128.00; Logan Valley Imp'l., Re, 14.36; William Mellor, Re, 222.00; Mentor Systems, Se, 17.50; Midwest Paper, Su, 41.77; Midwestern Paper, Re, 16.11; Nebraska Supreme Court, Re, 36.95; Norfolk Ink & Metal, Su, 14.44; Norfolk Office, Su, 19.95; Northeast Nebr. Ins., Re, 20000.00; Novelty Machine & Supply, Su, 36.04; Olds & Ensz, Se, 900.00; Pamida, Su, 31.03; Pecau Equipment, Su, 131.50; Keith Reed, Re, 159.50; R.W. Rice, Su, 54.08; Ellington Motors, Re, 39.80; Flexcomp Planners, Fe, 132.00; Fremont Sanitation, Se, 2754.00; Gerhold Concrete, Su, 40.00; Harold Stolz Co., Re, 1355.00; Howard R. Green Co., Se, 564.35; Ident-Kit Co., Fe, 408.00; J.P. Cooke Co., Su, 44.56; Koplin Auto, Re, 37.96; Kriz-Davis, Su, 392.06; Robert Lane, Re, 128.00; Logan Valley Imp'l., Re, 14.36; William Mellor, Re, 222.00; Mentor Systems, Se, 17.50; Midwest Paper, Su, 41.77; Midwestern Paper, Re, 16.11; Nebraska Supreme Court, Re, 36.95; Norfolk Ink & Metal, Su, 14.44; Norfolk Office, Su, 19.95; Northeast Nebr. Ins., Re, 20000.00; Novelty Machine & Supply, Su, 36.04; Olds & Ensz, Se, 900.00; Pamida, Su, 31.03; Pecau Equipment, Su, 131.50; Keith Reed, Re, 159.50; R.W. Rice, Su, 54.08; Ellington Motors, Re, 39.80; Flexcomp Planners, Fe, 132.00; Fremont Sanitation, Se, 2754.00; Gerhold Concrete, Su, 40.00; Harold Stolz Co., Re, 1355.00; Howard R. Green Co., Se, 564.35; Ident-Kit Co., Fe, 408.00; J.P. Cooke Co., Su, 44.56; Koplin Auto, Re, 37.96; Kriz-Davis, Su, 392.06; Robert Lane, Re, 128.00; Logan Valley Imp'l., Re, 14.36; William Mellor, Re, 222.00; Mentor Systems, Se, 17.50; Midwest Paper, Su, 41.77; Midwestern Paper, Re, 16.11; Nebraska Supreme Court, Re, 36.95; Norfolk Ink & Metal, Su, 14.44; Norfolk Office, Su, 19.95; Northeast Nebr. Ins., Re, 20000.00; Novelty Machine & Supply, Su, 36.04; Olds & Ensz, Se, 900.00; Pamida, Su, 31.03; Pecau Equipment, Su, 131.50; Keith Reed, Re, 159.50; R.W. Rice, Su, 54.08; Ellington Motors, Re, 39.80; Flexcomp Planners, Fe, 132.00; Fremont Sanitation, Se, 2754.00; Gerhold Concrete, Su, 40.00; Harold Stolz Co., Re, 1355.00; Howard R. Green Co., Se, 564.35; Ident-Kit Co., Fe, 408.00; J.P. Cooke Co., Su, 44.56; Koplin Auto, Re, 37.96; Kriz-Davis, Su, 392.06; Robert Lane, Re, 128.00; Logan Valley Imp'l., Re, 14.36; William Mellor, Re, 222.00; Mentor Systems, Se, 17.50; Midwest Paper, Su, 41.77; Midwestern Paper, Re, 16.11; Nebraska Supreme Court, Re, 36.95; Norfolk Ink & Metal, Su, 14.44; Norfolk Office, Su, 19.95; Northeast Nebr. Ins., Re, 20000.00; Novelty Machine & Supply, Su, 36.04; Olds & Ensz, Se, 900.00; Pamida, Su, 31.03; Pecau Equipment, Su, 131.50; Keith Reed, Re, 159.50; R.W. Rice, Su, 54.08; Ellington Motors, Re, 39.80; Flexcomp Planners, Fe, 132.00; Fremont Sanitation, Se, 2754.00; Gerhold Concrete, Su, 40.00; Harold Stolz Co., Re, 1355.00; Howard R. Green Co., Se, 564.35; Ident-Kit Co., Fe, 408.00; J.P. Cooke Co., Su, 44.56; Koplin Auto, Re, 37.96; Kriz-Davis, Su, 392.06; Robert Lane

## HELP WANTED

Laurel-Concord Public School is taking applications for substitute teachers in the areas of Secondary English and Spanish. If interested please send letter of application and resume to:  
 Superintendent  
 Laurel-Concord Public School  
 P.O. Box 8  
 Laurel, NE 68745

## NOTICE OF VACANCY

**SECRETARY II, Social Sciences Division.**  
 Hiring Rate \$1078/month, plus benefits. Job description and application form are available by writing to the Administrative Services Office, Hahn 104, Wayne State College, Wayne, NE 68787, or by phoning 402/375-2200, extension 485. Completed application form and letter of application are due in Hahn 104 by 5:00 p.m., Wednesday, February 21, 1990. Wayne State College is an Equal Opportunity/Affirmative Action Employer.

## GREAT DANE TRAILERS

Great Dane Trailers is currently accepting applications for production work in its Wayne, NE plant. Great Dane is a national manufacturer of semi-trailers offering employees a modern and clean manufacturing environment with an attractive wage and benefit package. Benefits include medical, no-deductible dental, prescription cards, life, disability, vacation, holidays, attendance bonus, pension plan, credit union, and more. Interested individuals may apply for employment at either the Wayne plant or The Nebraska Job Service office in Norfolk, NE.  
 — EEO —

**AGRI-BUSINESS MEN AND WOMEN.** One of nation's largest and best known feed manufacturers will soon have opening for full-time local sales and service representatives in the Wayne, Dixon, Dakota, Thurston County areas. On-the-job training. Excellent employee benefits. Strong income potential. Now is the time to call: 402-439-2501 - best time to call evenings. F814

**ATTENTION:** Easy work, excellent pay! Assembly products at home. Details: (1) 602-838-8885 Ext. W-3215. F192

**ATTENTION - HIRING!** Government jobs - your area. \$17,840 - \$69,485. Call 1-602-838-8885, Ext R 3215. F192

**DAIRY QUEEN** is taking applications for Monday-Friday daytime help. Apply at Dairy Queen, 7th and Main, Wayne. 1f

**HELP WANTED**  
**OPENINGS IN ASSEMBLY, FABRICATION AND PACKAGING. NO EXPERIENCE NECESSARY. APPLY IN PERSON BETWEEN 9 A.M. & 4 P.M. DV INDUSTRIES PENDER, NE** 1-15

**ADMINISTRATIVE ASSISTANT** to the Director. Responsibilities include public speaking, grant writing, development of special projects, etc. Candidate should possess administration experience in family services programs and/or equivalent work experience in these or related fields. Must have excellent oral and written communication skills plus work well with people. Send cover letter & resume by February 23, 1990 to Jim Deitloff, Executive Director, Goldenrod Hills CAC, P.O. Box 280, Wisner, Ne. 68791.  
 EQUAL OPPORTUNITY EMPLOYER 2-15

## HELP WANTED:

Inspector/Quality Control person for the Weatherization Program, to work in 14 counties in northeast Nebraska. Carpentry knowledge, math aptitude, and ability to do office paperwork necessary for liaison with contractors. Furnace experience helpful. Truck and tools furnished. Work duties require applicant to be physically capable and must meet company's driver and insurance requirements. Work station, GRHCAC Central office, Wisner. 40 hour week. Closing date: February 26, 1990, 4:30 p.m. For more information, contact Weatherization Director, Goldenrod Hills Community Action Agency, Box 280, Wisner, NE 68791. Phone 1:(402)529-3513. EQUAL OPPORTUNITY EMPLOYER. 2-15

## HEALTH CARE DIRECTORY

### DENTIST

**DR. GEORGE H. GOBLIRSCH, D.D.S.**  
 110 Main Street  
 Wayne, Nebraska  
 Phone 375-3200

### PHARMACIST

**WILL DAVIS, R.P.**  
 375-4249  
**SAV-MOR PHARMACY**  
 Phone 375-1444

### WAYNE DENTAL CLINIC

**S.P. BECKER, D.D.S.**  
 611 North Main Street  
 Wayne, Nebraska  
 Phone: 375-2889

### OPHTHALMOLOGIST

### MEDICAL EYE CLINIC

*Eye Care You Can Trust*  
 371-8535  
**H.D. Feidler, M.D.**  
 2800 W. Norfolk Ave.  
 Norfolk, Nebraska

### OPTOMETRIST

### WAYNE VISION CENTER

**DR. DONALD E. KOEBER**  
 OPTOMETRIST  
 313 Main St.  
 Phone 375-2020 Wayne, NE

### FAMILY VISION CENTER

*Quality & Complete Vision Care*  
 818 Ave. E  
 Wisner, Nebraska  
**529-3558**

### MAGNUSON EYE CARE

**Dr. Larry M. Magnuson**  
 Optometrist  
 509 Dearborn Street  
 Dearborn Mall  
 Wayne, Nebraska 68787  
 Telephone: 375-5160

### PHYSICIANS

### BENTHACK CLINIC

**Robert B. Benthack, M.D.**  
**Benjamin J. Martin, M.D.**  
**Gary J. West, PA-C**  
 215 West 2nd Street  
 Phone: 375-2500  
 Wayne, Nebraska

### NORFOLK MEDICAL GROUP, P.C.

**900 Norfolk Avenue**  
**402 / 371-3160**  
**Norfolk, Nebraska**

General Surgery: G.D. Adams, M.D., FACS; D.E. Hehner, M.D., FACS, Pediatrics: R.P. Votta, M.D., FAAP, D. Blumenberg, M.D., FAAP; Family Practice: T.J. Biga, M.D.; L.G. Handke, M.D.; W.F. Becker, M.D., FAAP; F.D. Dozon, M.D. Internal Medicine: W.J. Lear, M.D., D. Dudley, M.D.; Psychiatry: V. Canganelli, M.D.  
 Satellite Clinics - Pierce-Madison-Stanton

### WAYNE FAMILY PRACTICE GROUP P.C.

**Willis L. Wiseman, M.D.**  
**James A. Lindau, M.D.**  
**Dave Felber, M.D.**  
 214 Pearl Street  
 Wayne, NE 375-1600  
 Hours: Monday-Friday 8-12 & 1:30-4:30, Saturday 8-12

## FIRST NATIONAL-OMAHA SERVICE CENTER WAYNE, NEBRASKA

### ACCOUNT ADJUSTERS

The First National Bank of Omaha is seeking highly qualified individuals for our new Service Center in Wayne. Due to our rapid growth, we currently have openings for six Account adjusters.

- To qualify, candidates must possess the following:
- Excellent communication skills
  - 6 months previous experience as a collector, or comparable business experience
  - High school graduate or equivalent

This is an outstanding opportunity to be part of a growing local business. We offer a comprehensive benefits package including major medical, dental, and life insurance plus educational tuition reimbursement opportunities.

To make application, send resume or come to:

**FIRST NATIONAL - OMAHA SERVICE CENTER**  
 513 MAIN STREET  
 WAYNE, NEBRASKA 68787  
 9am-4pm Monday-Friday

**WHERE PROFESSIONALS MAKE THE DIFFERENCE**

"An Equal Opportunity Employer"

## BUSINESS & PROFESSIONAL DIRECTORY

### ACCOUNTING

**MAX KATHOL**  
 Certified Public Accountant  
 104 West 2nd  
 Wayne, Nebraska  
 375-4718

### REAL ESTATE

• Farm Sales • Home Sales  
 • Farm Management  
**MIDWEST**  
 Land Co.  
 206 Main-Wayne-375-3385

### CONSTRUCTION

**OTTE**  
 CONSTRUCTION COMPANY  
 • General Contractor  
 • Commercial • Residential  
 • Farm • Remodeling  
 East Highway 35  
 Wayne, NE 375-2180

### SERVICES

**WHITE HORSE**  
 SHOE REPAIR & GAS STATION  
 502 MAIN ST.  
 WAYNE  
 Leatherwork  
 Shoe Repair  
 Mens &  
 Womens Hats  
 Sams Dry  
 Services  
 Quality Work at  
 Lowest Prices!

GENERAL CONSTRUCTION  
**NORTHEAST NEBRASKA BUILDERS**  
 Box 444, 219 Main Street  
 Wakefield, NE 68784  
 Dennis E. Otte  
 Office: (402) 287-2687  
 Home: (402) 375-1634

**THE FINAL TOUCH**  
**FRAME & PRINT SHOP**  
 110 So. Logan Wayne, NE  
 375-2035  
 Located in Vakoc  
 Building & Home Center

### FINANCIAL PLANNING

**GEORGE PHELPS**  
 Certified Financial Planner  
 416 Main Wayne 375-1848



### INSURANCE

State National  
 Insurance Agency  
 Let us protect & service your insurance needs...  
 Mineshaft Mall - Wayne  
 Marty Summerfield  
 Work 375-4888 Home 375-1400

Independent Agent  
**DEPENDABLE INSURANCE**  
 for all your needs call:  
**375-2696**  
**PIA N.E. NEBRASKA**  
 INS. AGENCY  
 Wayne 111 West 3rd

**KEITH JECH**  
 INSURANCE AGENCY

IF THINGS GO WRONG,  
 INSURANCE  
 CAN HELP!  
 316 Main 375-1429 Wayne

### FIRST NATIONAL AGENCY

**Gary Boehle**  
**Steve Muir**  
 303 MAIN  
 WAYNE  
 PHONE:  
 375-2511

### PLUMBING

For all your plumbing needs contact:  
**JIM SPETHMAN**  
 375-4499

**SPETHMAN PLUMBING**  
 WAYNE, NEBRASKA

EMERGENCY.....911  
 POLICE.....375-2626  
 FIRE.....CALL 375-1122  
 HOSPITAL.....375-3800

Tired of Garbage Clutter from  
 Overturned Garbage Cans?  
**TWICE A WEEK PICKUP**  
 If you have any problems, call  
 us at 375-2147

### MRSNY SANITARY SERVICE

**COLLECTIONS**  
 •BANKS •MERCHANTS  
 •DOCTORS •HOSPITALS  
**RETURNED CHECKS**  
**ACCOUNTS**  
 Action Credit Corporation  
 Wayne, NE 68787  
 (402) 375-4609

**HABROCK APPRAISAL SERVICE**  
 Rural & Residential  
 Property Appraisals  
 P.O.Box 133  
 Emerson, NE 68733  
 Phone: 402-695-2714  
 Jennifer Habrock  
 Nebras Licensed Appraiser

**D & D PEST CONTROL & EXT.**  
 Dellis or Patsy Dimmick  
 Rt. 1, Box 168  
 Phone 605-565-3101 or  
 712-277-5148

**ELLIS ELECTRIC**  
**WAYNE 375-3566**  
**ALLEN**  
**635-2300**  
**OR 635-2456**

**HEIKES**  
**AUTOMOTIVE SERVICE**  
 •Major & Minor Repairs  
 •Automatic Trans. Repair  
 •Radiator Repairs  
 •24 Hour Wheel Service  
 •Geogear Tires  
 419 Main Street Wayne  
 PHONE: 375-4385

**3M** **LANER**  
 • COPIER SYSTEMS  
 • FACSIMILE SYSTEMS  
 • MICROFILM SYSTEMS  
 • AUDIO - VISION  
 CAPITAL BUSINESS SYSTEMS, INC.  
**MICHAEL D. SCOTT**  
 375-1626 800-221-0604

## FOR SALE

FOR SALE: Feeder Pig Coop shares in Coop located 4 miles north of Wisner. Call 385-2648 daytime, 385-2179 evenings. J2518

ATTENTION - GOVERNMENT HOMES from \$1 (U-repair). Delinquent tax property. Repossessions. Call 1-602-838-8885 Ext. GH 3215. F192

## FOR RENT

FOR RENT: Two one-bedroom apartments. Stove and refrigerator furnished, carpeted. Elderly or non-elderly may apply. Leisure Apartments. Call 375-2322 or 712-274-7740, collect. O30ff

FOR RENT: 2 bedroom apartment, partially furnished. Call 375-1600 or 375-4189. F1513

FOR RENT: Nice 2+ bedroom home in Carroll. Call 585-4716. F19ff

## WANTED

HELPING HANDS: Painting, cleaning, gardening; business and residential, inside or outside. Please call Betty Adams, evenings, 375-5257. F1513

## TO GIVE AWAY

TO GIVE AWAY - recliner chair needing upholstery. Contact Peggy or Gary after 6 p.m. 375-5434. F1

**CLASSIFIED HOTLINE**  
**CALL TOLL FREE**  
**1-800**  
**672-3418**

**CLASSIFIED RATES**  
**REGULAR RATES**  
**Standard Ads -**  
**25c A Word**  
**(Minimum of \$3.50)**  
**Third**  
**Consecutive Run**  
**Half Price**  
**DISPLAY ADS**  
**\$3.71 Per**  
**Column Inch**



**GEORGE PHELPS, CFP**  
**IDS OFFERS STOCK MARKET CERTIFICATE**  
 IDS Financial Services Inc. has introduced the IDS Stock Market Certificate, an investment certificate that provides guaranteed principal with a return tied to the performance of the stock market. The IDS Stock Market Certificate (available for an investment of \$1,000 or more) offers several options that will pay the investor interest based on changes in the New York Stock Exchange Composite Index during a 12 month term. Even if the Index declines, the original value of the investment remains intact.  
 "We're excited about this new product," said George Phelps, an IDS personal financial planner in the Wayne office of IDS. "The certificate allows investors to participate in market gains, but prevents them from losing principal if the market goes down."  
 This is a product that has many investment uses, but is especially well-suited for retirement plans or small pensions," Phelps added. According to Phelps, certificate investors may also choose to earn a guaranteed minimum rate of interest in addition to interest from stock market performance.  
 More information about the certificate is contained in its prospectus, which is available from all IDS financial planners. IDS Financial Services Inc. is an American Express Company.  
 Contact:  
**GEORGE PHELPS, CFP**  
 at 375-1848.

## COPY PAPER

**3.20**

**3.20**

**3.20**

**3.20**

**3.20**

## PER REAM

When You Purchase 2 Or More Cases (20 Reams)

Offer Expires February 28, 1990

FREE DELIVERY IN WAYNE

**THE WAYNE HERALD**  
 CALL TOLL FREE  
**1-800-672-3418**  
 114 MAIN ST.  
 WAYNE